

# [KO Validated] EZH2 Rabbit Polyclonal Antibody



CAB13867

## Product Information

### Size:

20uL, 50uL, 100uL, 200uL

### Observed MW:

105kDa

### Calculated MW:

79kDa/81kDa/84kDa/85kDa/  
86kDa

### Applications:

WB IP

### Reactivity:

Human

## Antibody Information

### Recommended dilutions:

WB 1:500 - 1:2000 IP 1:50 -  
1:100

### Source:

Rabbit

### Isotype:

IgG

### Purification:

Affinity purification

## Protein Background

This gene encodes a member of the Polycomb-group (PcG) family. PcG family members form multimeric protein complexes, which are involved in maintaining the transcriptional repressive state of genes over successive cell generations. This protein associates with the embryonic ectoderm development protein, the VAV1 oncoprotein, and the X-linked nuclear protein. This protein may play a role in the hematopoietic and central nervous systems. Multiple alternatively spliced transcript variants encoding distinct isoforms have been identified for this gene.

## Immunogen information

### Gene ID:

2146

### Uniprot

Q15910

### Synonyms:

ENX-1; ENX1; EZH1; EZH2b; KMT6; KMT6A; WVS; WVS2; EZH2;  
KMT6 / EZH2

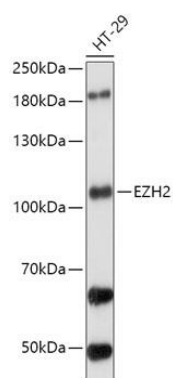
### Immunogen:

Recombinant fusion protein containing a sequence corresponding to amino acids 50-150 of human EZH2 (NP\_001190176.1).

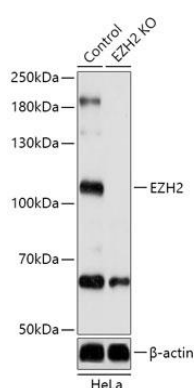
### Storage:

Store at -20°C. Avoid freeze / thaw cycles. Buffer: PBS with 0.02% sodium azide, 50% glycerol, pH7.3.

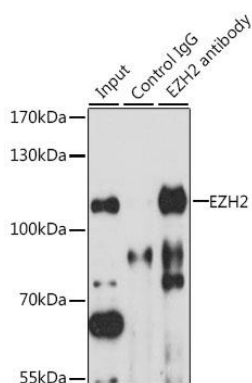
## Product Images



Western blot analysis of extracts of HT-29 cells, using EZH2 antibody (CAB13867) at 1:1000 dilution. Secondary antibody: HRP Goat Anti-Rabbit IgG (H+L) (CABS014) at 1:10000 dilution. Lysates/proteins: 25ug per lane. Blocking buffer: 3% nonfat dry milk in TBST. Detection: ECL Basic Kit (CABM00020). Exposure time: 10s.



Western blot analysis of extracts from normal (control) and EZH2 knockout (KO) HeLa cells, using EZH2 antibody (CAB13867) at 1:1000 dilution. Secondary antibody: HRP Goat Anti-Rabbit IgG (H+L) (CABS014) at 1:10000 dilution. Lysates/proteins: 25ug per lane. Blocking buffer: 3% nonfat dry milk in TBST. Detection: ECL Basic Kit (CABM00020). Exposure time: 10s.



Immunoprecipitation analysis of 200ug extracts of HT-29 cells, using 3 ug EZH2 antibody (CAB13867). Western blot was performed from the immunoprecipitate using EZH2 antibody (CAB13867) at a dilution of 1:1000.