

# FA2H Rabbit Polyclonal Antibody



CAB13873

## Product Information

### Size:

20uL, 50uL, 100uL, 200uL

### Observed MW:

38kDa

### Calculated MW:

18kDa/42kDa

### Applications:

WB IHC

### Reactivity:

Human, Rat

## Protein Background

This gene encodes a protein that catalyzes the synthesis of 2-hydroxysphingolipids, a subset of sphingolipids that contain 2-hydroxy fatty acids. Sphingolipids play roles in many cellular processes and their structural diversity arises from modification of the hydrophobic ceramide moiety, such as by 2-hydroxylation of the N-acyl chain, and the existence of many different head groups. Mutations in this gene have been associated with leukodystrophy dysmyelinating with spastic paraparesis with or without dystonia.

## Immunogen information

### Gene ID:

79152

### Uniprot

Q7L5A8

### Synonyms:

FA2H; FAAH; FAH1; FAXDC1; SCS7; SPG35

## Antibody Information

### Recommended dilutions:

WB 1:500 - 1:2000 IHC 1:50 - 1:200

### Source:

Rabbit

### Isotype:

IgG

### Purification:

Affinity purification

### Immunogen:

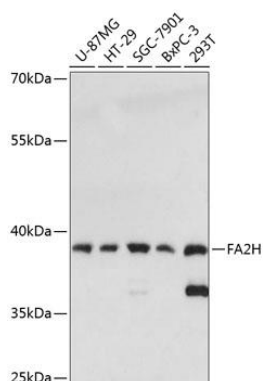
Recombinant fusion protein containing a sequence corresponding to amino acids 95-170 of human FA2H (NP\_077282.3).

### Storage:

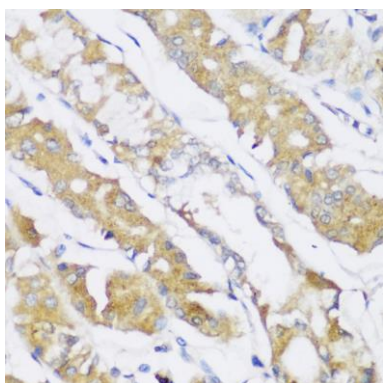
Store at -20°C. Avoid freeze / thaw cycles. Buffer: PBS with 0.02% sodium azide, 50% glycerol, pH7.3.

## Product Images

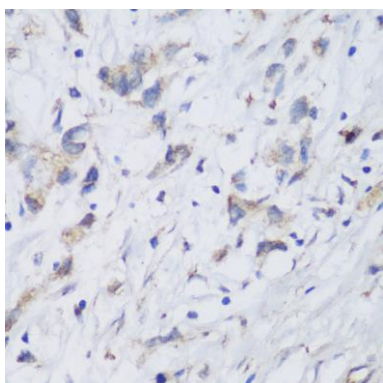
---



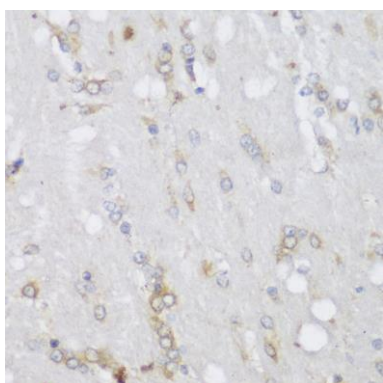
Western blot analysis of extracts of various cell lines, using FA2H antibody (CAB13873) at 1:3000 dilution. Secondary antibody: HRP Goat Anti-Rabbit IgG (H+L) (CABS014) at 1:10000 dilution. Lysates/proteins: 25ug per lane. Blocking buffer: 3% nonfat dry milk in TBST. Detection: ECL Enhanced Kit (CABM00021). Exposure time: 10s.



Immunohistochemistry of paraffin-embedded human stomach using FA2H antibody (CAB13873) at dilution of 1:150 (40x lens).



Immunohistochemistry of paraffin-embedded human gastric cancer using FA2H antibody (CAB13873) at dilution of 1:150 (40x lens).



Immunohistochemistry of paraffin-embedded rat brain using FA2H antibody (CAB13873) at dilution of 1:150 (40x lens).