

# RASEF Rabbit Polyclonal Antibody



CAB13877

---

## Product Information

### Size:

20uL, 50uL, 100uL, 200uL

### Observed MW:

83kDa

### Calculated MW:

20kDa/82kDa

### Applications:

WB

### Reactivity:

Mouse, Rat

## Protein Background

This gene is a member of the Rab family of GTPases that are involved in regulation of membrane traffic. The encoded protein contains an N-terminal EF-hand domain, a coiled-coil motif and a C-terminal Rab domain. A potential role as tumor suppressor has been indicated for this gene.

## Immunogen information

### Gene ID:

158158

### Uniprot

Q8IZ41

### Synonyms:

RASEF; RAB45

## Antibody Information

### Recommended dilutions:

WB 1:500 - 1:2000

### Source:

Rabbit

### Isotype:

IgG

### Purification:

Affinity purification

### Immunogen:

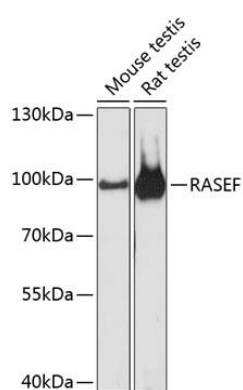
Recombinant fusion protein containing a sequence corresponding to amino acids 200-500 of human RASEF (NP\_689786.2).

### Storage:

Store at -20°C. Avoid freeze / thaw cycles. Buffer: PBS with 0.02% sodium azide, 50% glycerol, pH7.3.

## Product Images

---



Western blot analysis of extracts of various cell lines, using RASEF antibody (CAB13877) at 1:3000 dilution. Secondary antibody: HRP Goat Anti-Rabbit IgG (H+L) (CABS014) at 1:10000 dilution. Lysates/proteins: 25ug per lane. Blocking buffer: 3% nonfat dry milk in TBST. Detection: ECL Basic Kit (CABM00020). Exposure time: 30s.