

FCGR2A Rabbit Polyclonal Antibody



CAB1388

Product Information

Size:

20uL, 50uL, 100uL, 200uL

Observed MW:

40-50KDa

Calculated MW:

34kDa/35kDa

Applications:

WB IF

Reactivity:

Human, Mouse

Antibody Information

Recommended dilutions:

WB 1:500 - 1:2000 IF 1:50 - 1:200

Source:

Rabbit

Isotype:

IgG

Purification:

Affinity purification

Protein Background

This gene encodes one member of a family of immunoglobulin Fc receptor genes found on the surface of many immune response cells. The protein encoded by this gene is a cell surface receptor found on phagocytic cells such as macrophages and neutrophils, and is involved in the process of phagocytosis and clearing of immune complexes. Alternative splicing results in multiple transcript variants.

Immunogen information

Gene ID:

2212

Uniprot

P12318

Synonyms:

FCGR2A; CD32; CD32A; CDw32; FCG2; FCGR2; FCGR2A1; FcGR; IGFR2

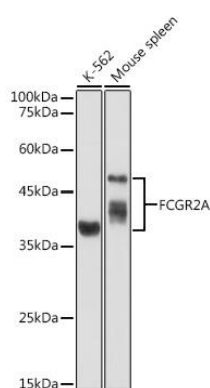
Immunogen:

Recombinant fusion protein containing a sequence corresponding to amino acids 34-316 of human FCGR2A (NP_067674.2).

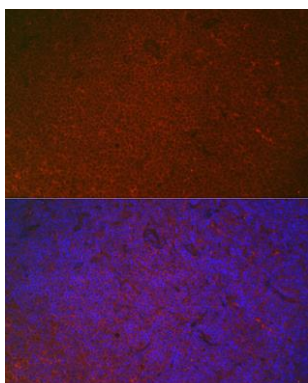
Storage:

Store at -20°C. Avoid freeze / thaw cycles. Buffer: PBS with 0.02% sodium azide, 50% glycerol, pH7.3.

Product Images



Western blot analysis of extracts of various cell lines, using FCGR2A antibody (CAB1388) at 1:1000 dilution. Secondary antibody: HRP Goat Anti-Rabbit IgG (H+L) (CABS014) at 1:10000 dilution. Lysates/proteins: 25ug per lane. Blocking buffer: 3% nonfat dry milk in TBST. Detection: ECL Basic Kit (CABM00020). Exposure time: 90s.



Immunofluorescence analysis of mouse spleen using FCGR2A Rabbit pAb (CAB1388) at dilution of 1:100 (40x lens). Blue: DAPI for nuclear staining.