

KRI1 Rabbit Polyclonal Antibody



CAB13881

Product Information

Size:

20uL, 50uL, 100uL, 200uL

Observed MW:

120kDa

Calculated MW:

82kDa

Applications:

WB

Reactivity:

Human

Protein Background

This gene overlaps with the gene for cysteine endopeptidase AUT-like 4 in a head-to-tail orientation.

Immunogen information

Gene ID:

65095

Uniprot

Q8N9T8

Synonyms:

KRI1

Immunogen:

Recombinant fusion protein containing a sequence corresponding to amino acids 410-709 of human KRI1 (NP_075384.3).

Antibody Information

Recommended dilutions:

WB 1:500 - 1:2000

Source:

Rabbit

Isotype:

IgG

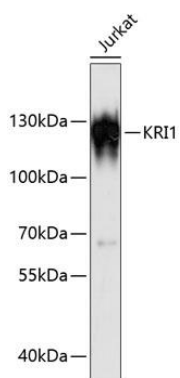
Purification:

Affinity purification

Storage:

Store at -20°C. Avoid freeze / thaw cycles. Buffer: PBS with 0.02% sodium azide, 50% glycerol, pH7.3.

Product Images



Western blot analysis of extracts of Jurkat cells, using KRI1 antibody (CAB13881) at 1:3000 dilution. Secondary antibody: HRP Goat Anti-Rabbit IgG (H+L) (CABS014) at 1:10000 dilution. Lysates/proteins: 25ug per lane. Blocking buffer: 3% nonfat dry milk in TBST. Detection: ECL Basic Kit (CABM00020). Exposure time: 1s.