

DPYSL5 Rabbit Polyclonal Antibody



CAB13892

Product Information

Size:

20uL, 50uL, 100uL, 200uL

Observed MW:

61kDa

Calculated MW:

61kDa

Applications:

WB

Reactivity:

Human, Rat

Protein Background

This gene encodes a member of the CRMP (collapsing response mediator protein) family thought to be involved in neural development. Antibodies to the encoded protein were found in some patients with neurologic symptoms who had paraneoplastic syndrome. A pseudogene of this gene is found on chromosome 11. Multiple alternatively spliced variants, encoding the same protein, have been identified.

Immunogen information

Gene ID:

56896

Uniprot

Q9BPU6

Synonyms:

DPYSL5; CRAM; CRMP-5; CRMP5; Ulip6

Antibody Information

Recommended dilutions:

WB 1:500 - 1:2000

Source:

Rabbit

Isotype:

IgG

Purification:

Affinity purification

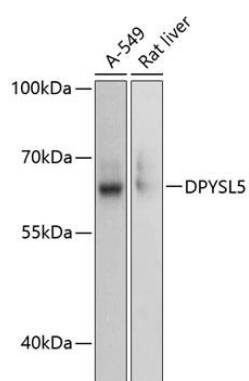
Immunogen:

Recombinant fusion protein containing a sequence corresponding to amino acids 445-564 of human DPYSL5 (NP_064519.2).

Storage:

Store at -20°C. Avoid freeze / thaw cycles. Buffer: PBS with 0.02% sodium azide, 50% glycerol, pH7.3.

Product Images



Western blot analysis of extracts of various cell lines, using DPYSL5 antibody (CAB13892) at 1:3000 dilution. Secondary antibody: HRP Goat Anti-Rabbit IgG (H+L) (CABS014) at 1:10000 dilution. Lysates/proteins: 25ug per lane. Blocking buffer: 3% nonfat dry milk in TBST. Detection: ECL Basic Kit (CABM00020). Exposure time: 1s.