

ATP13A1 Rabbit Polyclonal Antibody



CAB13900

Product Information

Size:

20uL, 50uL, 100uL, 200uL

Observed MW:

133kDa

Calculated MW:

38kDa/121kDa/132kDa

Applications:

WB IHC

Reactivity:

Human, Mouse

Antibody Information

Recommended dilutions:

WB 1:500 - 1:2000 IHC 1:50
- 1:100

Source:

Rabbit

Isotype:

IgG

Purification:

Affinity purification

Protein Background

Immunogen information

Gene ID:

57130

Uniprot

Q9HD20

Synonyms:

ATP13A1; ATP13A; CGI-152

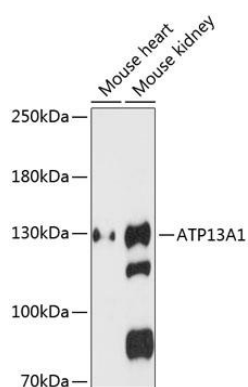
Immunogen:

Recombinant fusion protein containing a sequence corresponding to amino acids 880-960 of human ATP13A1 (NP_065143.2).

Storage:

Store at -20°C. Avoid freeze / thaw cycles. Buffer: PBS with 0.02% sodium azide, 50% glycerol, pH7.3.

Product Images



Western blot analysis of extracts of various cell lines, using ATP13A1 antibody (CAB13900) at 1:3000 dilution. Secondary antibody: HRP Goat Anti-Rabbit IgG (H+L) (CABS014) at 1:10000 dilution. Lysates/proteins: 25ug per lane. Blocking buffer: 3% nonfat dry milk in TBST. Detection: ECL Enhanced Kit (CABM00021). Exposure time: 90s.