

# STARD5 Rabbit Polyclonal Antibody



CAB13901

---

## Product Information

### Size:

20uL, 50uL, 100uL, 200uL

### Observed MW:

24kDa

### Calculated MW:

7kDa/23kDa

### Applications:

WB

### Reactivity:

Human

## Antibody Information

### Recommended dilutions:

WB 1:500 - 1:2000

### Source:

Rabbit

### Isotype:

IgG

### Purification:

Affinity purification

## Protein Background

Proteins containing a steroidogenic acute regulatory-related lipid transfer (START) domain are often involved in the trafficking of lipids and cholesterol between diverse intracellular membranes. This gene is a member of the StarD subfamily that encodes START-related lipid transfer proteins. The protein encoded by this gene is a cholesterol transporter and is also able to bind and transport other sterol-derived molecules related to the cholesterol/bile acid biosynthetic pathways such as 25-hydroxycholesterol. Its expression is upregulated during endoplasmic reticulum (ER) stress. The protein is thought to act as a cytosolic sterol transporter that moves cholesterol between intracellular membranes such as from the cytoplasm to the ER and from the ER to the Golgi apparatus. Alternative splicing of this gene produces multiple transcript variants.

## Immunogen information

### Gene ID:

80765

### Uniprot

Q9NSY2

### Synonyms:

STARD5

### Immunogen:

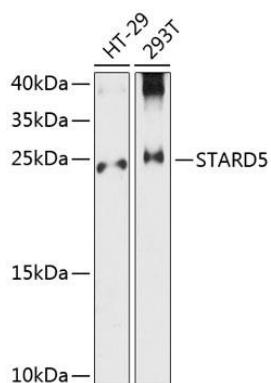
Recombinant fusion protein containing a sequence corresponding to amino acids 1-213 of human STARD5 (NP\_871629.1).

### Storage:

Store at -20°C. Avoid freeze / thaw cycles. Buffer: PBS with 0.02% sodium azide, 50% glycerol, pH7.3.

## Product Images

---



Western blot analysis of extracts of various cell lines, using STARD5 antibody (CAB13901) at 1:300 dilution. Secondary antibody: HRP Goat Anti-Rabbit IgG (H+L) (CABS014) at 1:10000 dilution. Lysates/proteins: 25ug per lane. Blocking buffer: 3% nonfat dry milk in TBST. Detection: ECL Basic Kit (CABM00020). Exposure time: 30s.