

PKM Rabbit Polyclonal Antibody



CAB13905

Product Information

Size:

20uL, 50uL, 100uL, 200uL

Observed MW:

60kDa

Calculated MW:

56kDa/57kDa/58kDa

Applications:

WB IHC IF

Reactivity:

Human, Mouse, Rat

Antibody Information

Recommended dilutions:

WB 1:500 - 1:2000 IHC 1:50
- 1:200 IF 1:50 - 1:200

Source:

Rabbit

Isotype:

IgG

Purification:

Affinity purification

Protein Background

This gene encodes a protein involved in glycolysis. The encoded protein is a pyruvate kinase that catalyzes the transfer of a phosphoryl group from phosphoenolpyruvate to ADP, generating ATP and pyruvate. This protein has been shown to interact with thyroid hormone and may mediate cellular metabolic effects induced by thyroid hormones. This protein has been found to bind Opa protein, a bacterial outer membrane protein involved in gonococcal adherence to and invasion of human cells, suggesting a role of this protein in bacterial pathogenesis. Several alternatively spliced transcript variants encoding a few distinct isoforms have been reported.

Immunogen information

Gene ID:

5315

Uniprot

P14618

Synonyms:

CTHBP; HEL-S-30; OIP3; PK3; PKM2; TCB; THBP1; PKM

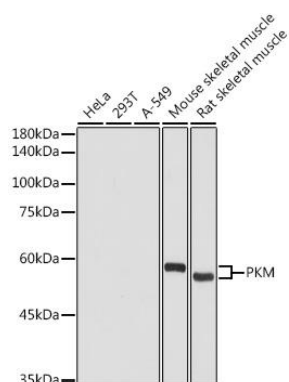
Immunogen:

Recombinant fusion protein containing a sequence corresponding to amino acids 11-221 of human PKM (NP_002645.3).

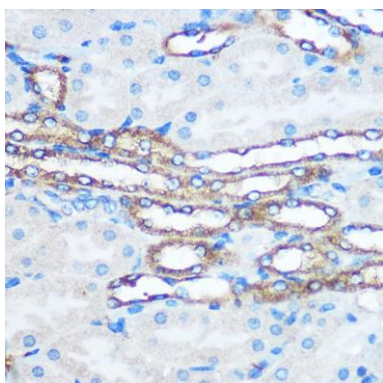
Storage:

Store at -20°C. Avoid freeze / thaw cycles. Buffer: PBS with 0.02% sodium azide, 50% glycerol, pH7.3.

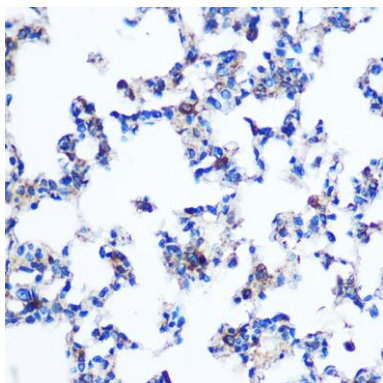
Product Images



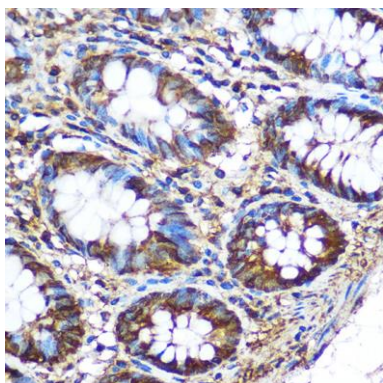
Western blot analysis of extracts of various cell lines, using PKM antibody (CAB13905) at 1:1000 dilution. Secondary antibody: HRP Goat Anti-Rabbit IgG (H+L) (CABS014) at 1:10000 dilution. Lysates/proteins: 25ug per lane. Blocking buffer: 3% nonfat dry milk in TBST. Detection: ECL Basic Kit (CABM00020). Exposure time: 3s.



Immunohistochemistry of paraffin-embedded Mouse kidney using PKM Rabbit pAb (CAB13905) at dilution of 1:100 (40x lens).



Immunohistochemistry of paraffin-embedded Rat lung using PKM Rabbit pAb (CAB13905) at dilution of 1:100 (40x lens).



Immunohistochemistry of paraffin-embedded Human colon using PKM Rabbit pAb (CAB13905) at dilution of 1:100 (40x lens).