

SUGT1 Rabbit Polyclonal Antibody



CAB13908

Product Information

Size:

20uL, 50uL, 100uL, 200uL

Observed MW:

38kDa/41kDa

Calculated MW:

37kDa/41kDa

Applications:

WB

Reactivity:

Human, Mouse, Rat

Protein Background

This gene encodes a highly conserved nuclear protein involved in kinetochore function and required for the G1/S and G2/M transitions. This protein interacts with heat shock protein 90. Alternative splicing results in multiple transcript variants. Pseudogenes for this gene have been defined on several different chromosomes.

Immunogen information

Gene ID:

10910

Uniprot

Q9Y2Z0

Synonyms:

SUGT1; SGT1

Antibody Information

Recommended dilutions:

WB 1:200 - 1:2000

Source:

Rabbit

Isotype:

IgG

Purification:

Affinity purification

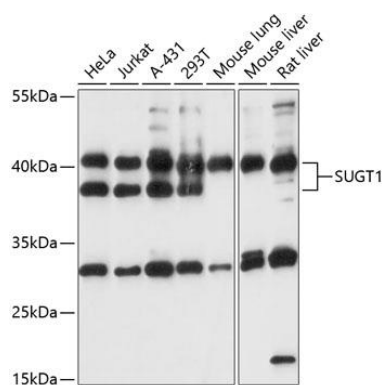
Immunogen:

Recombinant fusion protein containing a sequence corresponding to amino acids 159-333 of human SUGT1 (NP_006695.1).

Storage:

Store at -20°C. Avoid freeze / thaw cycles. Buffer: PBS with 0.02% sodium azide, 50% glycerol, pH7.3.

Product Images



Western blot analysis of extracts of various cell lines, using SUGT1 antibody (CAB13908) at 1:1000 dilution. Secondary antibody: HRP Goat Anti-Rabbit IgG (H+L) (CABS014) at 1:10000 dilution. Lysates/proteins: 25ug per lane. Blocking buffer: 3% nonfat dry milk in TBST. Detection: ECL Basic Kit (CABM00020). Exposure time: 30s.