

CUL4A Rabbit Polyclonal Antibody



CAB13911

Product Information

Size:

20uL, 50uL, 100uL, 200uL

Observed MW:

80kDa/90kDa

Calculated MW:

76kDa/87kDa

Applications:

WB

Reactivity:

Human, Mouse

Antibody Information

Recommended dilutions:

WB 1:500 - 1:2000

Source:

Rabbit

Isotype:

IgG

Purification:

Affinity purification

Protein Background

Immunogen information

Gene ID:

8451

Uniprot

Q13619

Synonyms:

CUL4A; cullin-4A

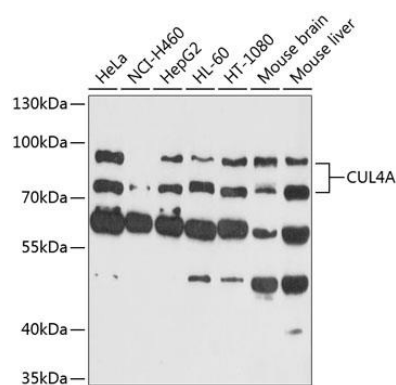
Immunogen:

Recombinant fusion protein containing a sequence corresponding to amino acids 510-759 of human CUL4A (NP_001008895.1).

Storage:

Store at -20°C. Avoid freeze / thaw cycles. Buffer: PBS with 0.02% sodium azide, 50% glycerol, pH7.3.

Product Images



Western blot analysis of extracts of various cell lines, using CUL4A antibody (CAB13911) at 1:1000 dilution. Secondary antibody: HRP Goat Anti-Rabbit IgG (H+L) (CABS014) at 1:10000 dilution. Lysates/proteins: 25ug per lane. Blocking buffer: 3% nonfat dry milk in TBST. Detection: ECL Basic Kit (CABM00020). Exposure time: 90s.