

P2RY2 Rabbit Polyclonal Antibody



CAB13923

Product Information

Size:

20uL, 50uL, 100uL, 200uL

Observed MW:

42-52kDa

Calculated MW:

42kDa

Applications:

WB IHC

Reactivity:

Human, Mouse, Rat

Antibody Information

Recommended dilutions:

WB 1:500 - 1:2000 IHC 1:50
- 1:200

Source:

Rabbit

Isotype:

IgG

Purification:

Affinity purification

Protein Background

The product of this gene belongs to the family of P2 receptors, which is activated by extracellular nucleotides and subdivided into P2X ligand-gated ion channels and P2Y G-protein coupled receptors. This family has several receptor subtypes with different pharmacological selectivity, which overlaps in some cases, for various adenosine and uridine nucleotides. This receptor, found on many cell types, is activated by ATP and UTP and is reported to be overexpressed on some cancer cell types. It is involved in many cellular functions, such as proliferation, apoptosis and inflammation. Three transcript variants encoding the same protein have been identified for this gene.

Immunogen information

Gene ID:

5029

Uniprot

P41231

Synonyms:

P2RY2; HP2U; P2RU1; P2U; P2U1; P2UR; P2Y2; P2Y2R

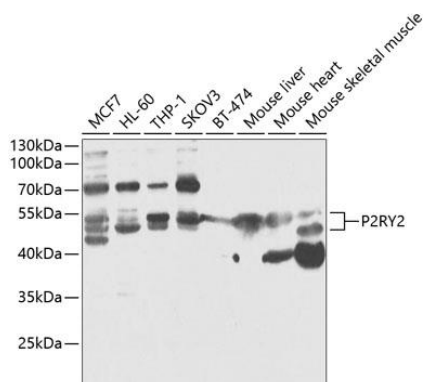
Immunogen:

Recombinant fusion protein containing a sequence corresponding to amino acids 278-377 of human P2RY2 (NP_788086.1).

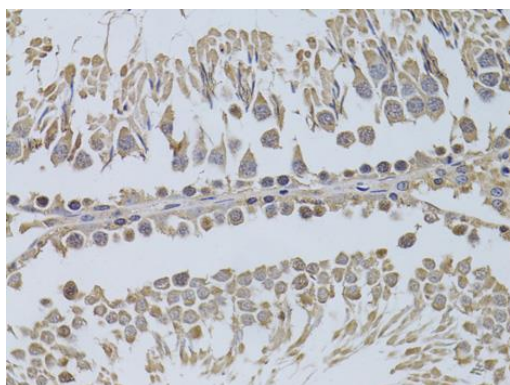
Storage:

Store at -20°C. Avoid freeze / thaw cycles. Buffer: PBS with 0.02% sodium azide, 50% glycerol, pH7.3.

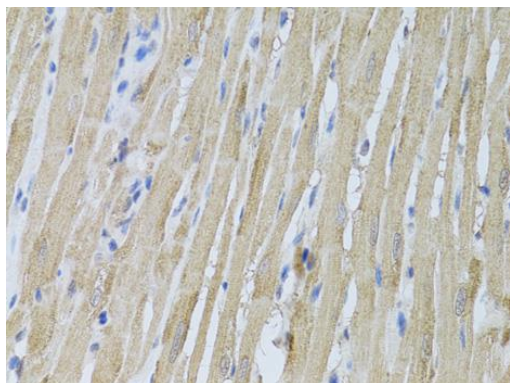
Product Images



Western blot analysis of extracts of various cell lines, using P2RY2 antibody (CAB13923) at 1:1000 dilution. Secondary antibody: HRP Goat Anti-Rabbit IgG (H+L) (CABS014) at 1:10000 dilution. Lysates/proteins: 25ug per lane. Blocking buffer: 3% nonfat dry milk in TBST.



Immunohistochemistry of paraffin-embedded rat testis using P2RY2 antibody (CAB13923) at dilution of 1:100 (40x lens).



Immunohistochemistry of paraffin-embedded rat heart using P2RY2 antibody (CAB13923) at dilution of 1:100 (40x lens).