

# PHLDA2 Rabbit Polyclonal Antibody



CAB13924

## Product Information

### Size:

20uL, 50uL, 100uL, 200uL

### Observed MW:

Refer to figures

### Calculated MW:

17kDa

### Applications:

WB IHC

### Reactivity:

Human, Rat

## Protein Background

This gene is located in a cluster of imprinted genes on chromosome 11p15.5, which is considered to be an important tumor suppressor gene region. Alterations in this region may be associated with the Beckwith-Wiedemann syndrome, Wilms tumor, rhabdomyosarcoma, adrenocortical carcinoma, and lung, ovarian, and breast cancer. This gene has been shown to be imprinted, with preferential expression from the maternal allele in placenta and liver.

## Immunogen information

### Gene ID:

7262

### Uniprot

Q53GA4

### Synonyms:

PHLDA2; BRW1C; BWR1C; HLDA2; IPL; TSSC3

## Antibody Information

### Recommended dilutions:

WB 1:500 - 1:2000 IHC 1:50  
- 1:200

### Source:

Rabbit

### Isotype:

IgG

### Purification:

Affinity purification

### Immunogen:

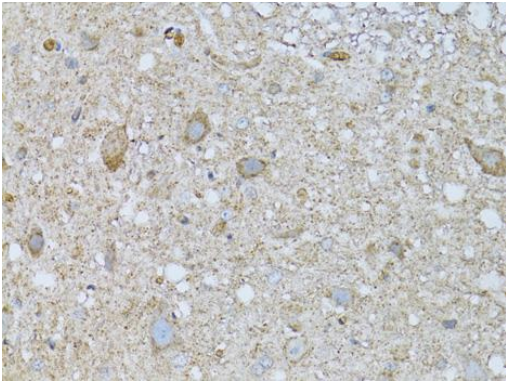
Recombinant fusion protein containing a sequence corresponding to amino acids 1-152 of human PHLDA2 (NP\_003302.1).

### Storage:

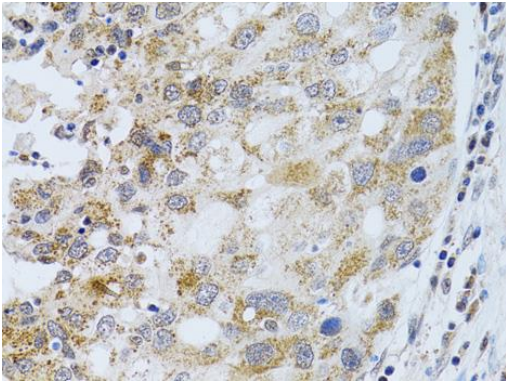
Store at -20°C. Avoid freeze / thaw cycles. Buffer: PBS with 0.02% sodium azide, 50% glycerol, pH7.3.

## Product Images

---



Immunohistochemistry of paraffin-embedded rat spinal cord using PHLDA2 antibody (CAB13924) at dilution of 1:100 (40x lens).



Immunohistochemistry of paraffin-embedded human breast cancer using PHLDA2 antibody (CAB13924) at dilution of 1:100 (40x lens).