

SIN3A Rabbit Polyclonal Antibody



CAB13928

Product Information

Size:

20uL, 50uL, 100uL, 200uL

Observed MW:

147kDa

Calculated MW:

145kDa

Applications:

WB IHC

Reactivity:

Human, Rat

Protein Background

The protein encoded by this gene is a transcriptional regulatory protein. It contains paired amphipathic helix (PAH) domains, which are important for protein-protein interactions and may mediate repression by the Mad-Max complex.

Immunogen information

Gene ID:

25942

Uniprot

Q96ST3

Synonyms:

SIN3A; WITKOS

Antibody Information

Recommended dilutions:

WB 1:500 - 1:2000 IHC 1:50
- 1:200

Source:

Rabbit

Isotype:

IgG

Purification:

Affinity purification

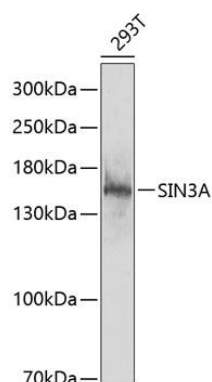
Immunogen:

Recombinant fusion protein containing a sequence corresponding to amino acids 1-120 of human SIN3A (NP_056292.1).

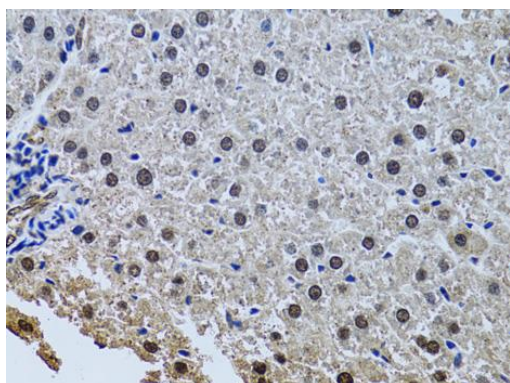
Storage:

Store at -20°C. Avoid freeze / thaw cycles. Buffer: PBS with 0.02% sodium azide, 50% glycerol, pH7.3.

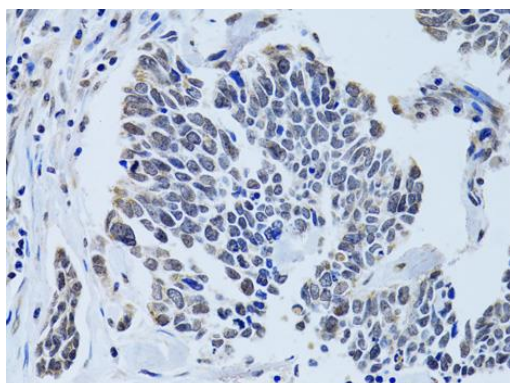
Product Images



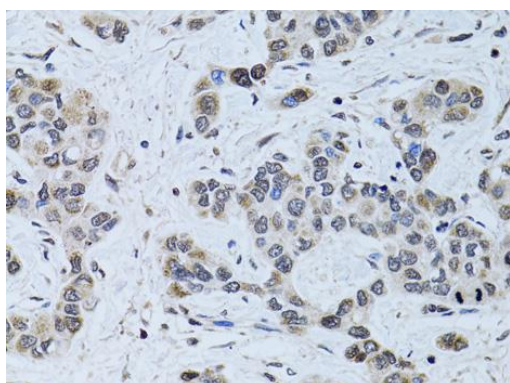
Western blot analysis of extracts of 293T cells, using SIN3A antibody (CAB13928) at 1:1000 dilution. Secondary antibody: HRP Goat Anti-Rabbit IgG (H+L) (CABS014) at 1:10000 dilution. Lysates/proteins: 25ug per lane. Blocking buffer: 3% nonfat dry milk in TBST. Detection: ECL Enhanced Kit (CABM00021). Exposure time: 90s.



Immunohistochemistry of paraffin-embedded rat liver using SIN3A antibody (CAB13928) at dilution of 1:100 (40x lens).



Immunohistochemistry of paraffin-embedded human lung cancer using SIN3A antibody (CAB13928) at dilution of 1:100 (40x lens).



Immunohistochemistry of paraffin-embedded human liver cancer using SIN3A antibody (CAB13928) at dilution of 1:100 (40x lens).