

CD34 Rabbit Polyclonal Antibody



CAB13929

Product Information

Size:

20uL, 50uL, 100uL, 200uL

Observed MW:

105kDa

Calculated MW:

41kDa

Category:

Primary Antibody

Applications:

WB, IHC-P, IF/ICC

Reactivity:

Human, Mouse, Rat

Antibody Information

Recommended dilutions:

WB 1:500 - 1:1000
IHC-P 1:50 - 1:200
IF 1:50 - 1:200

Source:

Rabbit

Isotype:

IgG

Purification:

Affinity purification

Protein Background

The protein encoded by this gene may play a role in the attachment of stem cells to the bone marrow extracellular matrix or to stromal cells. This single-pass membrane protein is highly glycosylated and phosphorylated by protein kinase C. Two transcript variants encoding different isoforms have been found for this gene.

Immunogen information

Gene ID:

947

Uniprot

P28906

Synonyms:

CD34;CD34 molecule;GIG3;MORT1

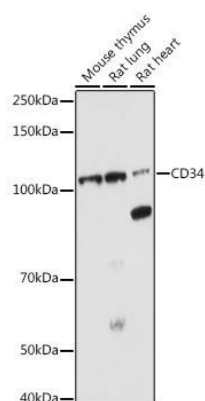
Immunogen:

A synthetic peptide corresponding to a sequence within amino acids 50-150 of human CD34 (NP_001020280.1).

Storage:

Store at -20°C. Avoid freeze / thaw cycles.
Buffer: PBS with 0.01% thiomersal, 50% glycerol, pH 7.3.

Product Images

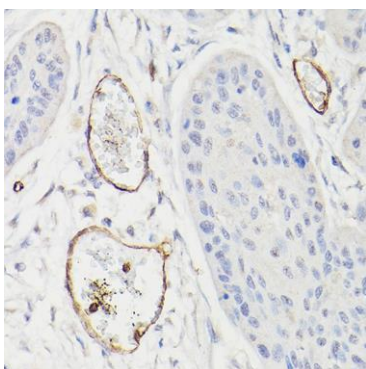


Western blot analysis of extracts of various cell lines, using CD34 antibody (CAB13929) at 1:1000 dilution.

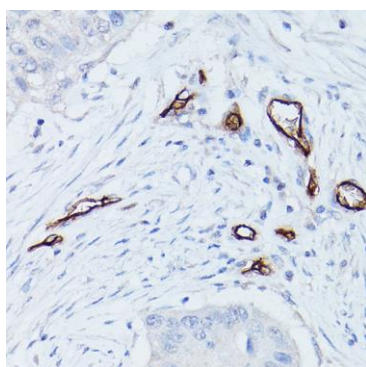
Secondary antibody: HRP Goat Anti-Rabbit IgG (H+L) (CABS014) at 1:10000 dilution. Lysates/proteins: 25ug per lane.

Blocking buffer: 3% nonfat dry milk in TBST. Detection: ECL Enhanced Kit (AbGn00021).

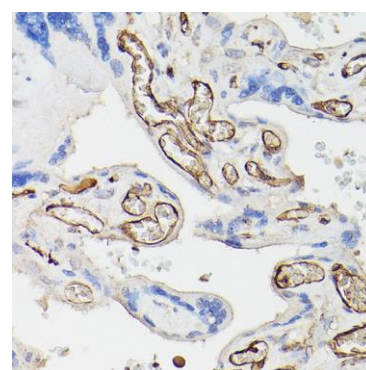
Exposure time: 180s.



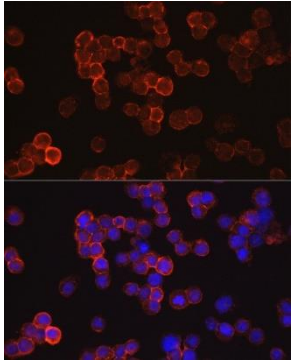
Immunohistochemistry of paraffin- embedded human esophageal cancer using CD34 Rabbit pAb (CAB13929) at dilution of 1:100 (40x lens). Perform high pressure antigen retrieval with 10 mM citrate buffer pH 6.0 before commencing with IHC staining protocol.



Immunohistochemistry of paraffin- embedded human lung cancer using CD34 Rabbit pAb (CAB13929) at dilution of 1:100 (40x lens). Perform high pressure antigen retrieval with 10 mM citrate buffer pH 6.0 before commencing with IHC staining protocol



Immunohistochemistry of paraffin- embedded human placenta using CD34 Rabbit pAb (CAB13929) at dilution of 1:100 (40x lens). Perform high pressure antigen retrieval with 10 mM citrate buffer pH 6.0 before commencing with IHC staining protocol.



Immunofluorescence analysis of TF-1 cells using CD34 Rabbit pAb (CAB13929) at dilution of 1:50 (40x lens). Blue: DAPI for nuclear staining.