

# PAX3 Rabbit Polyclonal Antibody



CAB13930

## Product Information

### Size:

20uL, 50uL, 100uL, 200uL

### Observed MW:

65kDa

### Calculated MW:

22kDa/24kDa/44kDa/45kDa/  
52kDa/53kDa/55kDa

### Applications:

WB IHC

### Reactivity:

Human, Mouse, Rat

## Antibody Information

### Recommended dilutions:

WB 1:500 - 1:2000 IHC 1:50  
- 1:200

### Source:

Rabbit

### Isotype:

IgG

### Purification:

Affinity purification

## Protein Background

This gene is a member of the paired box (PAX) family of transcription factors. Members of the PAX family typically contain a paired box domain and a paired-type homeodomain. These genes play critical roles during fetal development. Mutations in paired box gene 3 are associated with Waardenburg syndrome, craniofacial-deafness-hand syndrome, and alveolar rhabdomyosarcoma. The translocation t(2;13)(q35;q14), which represents a fusion between PAX3 and the forkhead gene, is a frequent finding in alveolar rhabdomyosarcoma. Alternative splicing results in transcripts encoding isoforms with different C-termini.

## Immunogen information

### Gene ID:

5077

### Uniprot

P23760

### Synonyms:

PAX3; CDHS; HUP2; WS1; WS3

### Immunogen:

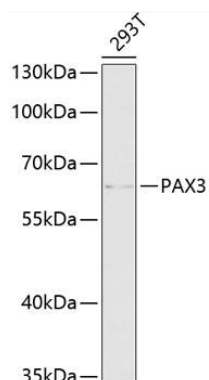
Recombinant fusion protein containing a sequence corresponding to amino acids 1-206 of human PAX3 (NP\_039230.1).

### Storage:

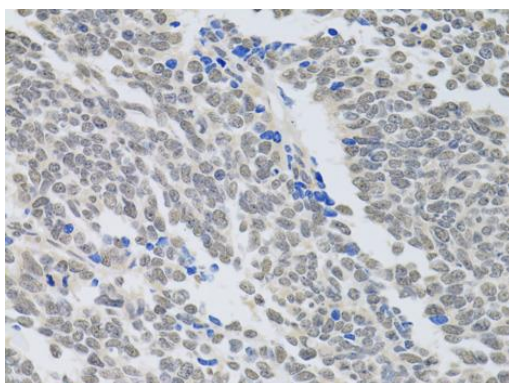
Store at -20°C. Avoid freeze / thaw cycles. Buffer: PBS with 0.02% sodium azide, 50% glycerol, pH7.3.

## Product Images

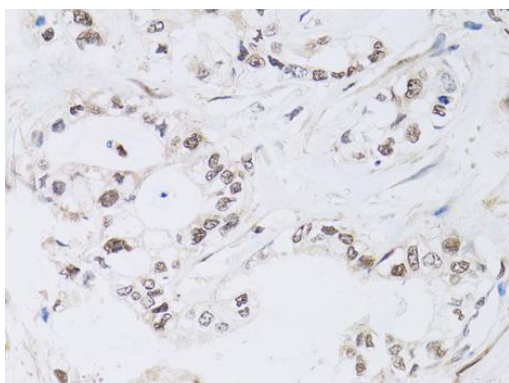
---



Western blot analysis of extracts of 293T cells, using PAX3 antibody (CAB13930) at 1:1000 dilution. Secondary antibody: HRP Goat Anti-Rabbit IgG (H+L) (CABS014) at 1:10000 dilution. Lysates/proteins: 25ug per lane. Blocking buffer: 3% nonfat dry milk in TBST. Detection: ECL Basic Kit (CABM00020). Exposure time: 30s.



Immunohistochemistry of paraffin-embedded human lung cancer using PAX3 antibody (CAB13930) at dilution of 1:100 (40x lens).



Immunohistochemistry of paraffin-embedded human gastric cancer using PAX3 antibody (CAB13930) at dilution of 1:100 (40x lens).