

SMC4 Rabbit Polyclonal Antibody



CAB13933

Product Information

Size:

20uL, 50uL, 100uL, 200uL

Observed MW:

147kDa

Calculated MW:

140kDa/147kDa

Applications:

WB

Reactivity:

Human

Protein Background

This gene belongs to the 'structural maintenance of chromosomes' (SMC) gene family. Members of this gene family play a role in two changes in chromosome structure during mitotic segregation of chromosomes- chromosome condensation and sister chromatid cohesion. The protein encoded by this gene is likely a subunit of the 13S condensin complex, which is involved in chromosome condensation. A pseudogene related to this gene is located on chromosome 2.

Immunogen information

Gene ID:

10051

Uniprot

Q9NTJ3

Synonyms:

SMC4; CAP-C; CAPC; SMC-4; SMC4L1; hCAP-C

Antibody Information

Recommended dilutions:

WB 1:500 - 1:2000

Source:

Rabbit

Isotype:

IgG

Purification:

Affinity purification

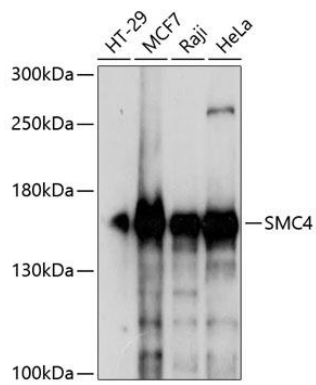
Immunogen:

A synthetic peptide corresponding to a sequence within amino acids 1-100 of human SMC4 (NP_001275682.1).

Storage:

Store at -20°C. Avoid freeze / thaw cycles. Buffer: PBS with 0.02% sodium azide, 50% glycerol, pH7.3.

Product Images



Western blot analysis of extracts of various cell lines, using SMC4 antibody (CAB13933) at 1:1000 dilution. Secondary antibody: HRP Goat Anti-Rabbit IgG (H+L) (CABS014) at 1:10000 dilution. Lysates/proteins: 25ug per lane. Blocking buffer: 3% nonfat dry milk in TBST. Detection: ECL Enhanced Kit (CABM00021). Exposure time: 3s.