

AGA Rabbit Polyclonal Antibody



CAB13942

Product Information

Size:

20uL, 50uL, 100uL, 200uL

Observed MW:

18kDa

Calculated MW:

37kDa

Applications:

WB IF

Reactivity:

Human, Mouse

Antibody Information

Recommended dilutions:

WB 1:500 - 1:1000 IF 1:50 - 1:100

Source:

Rabbit

Isotype:

IgG

Purification:

Affinity purification

Protein Background

This gene encodes a member of the N-terminal nucleophile (Ntn) hydrolase family of proteins. The encoded preproprotein is proteolytically processed to generate alpha and beta chains that comprise the mature enzyme. This enzyme is involved in the catabolism of N-linked oligosaccharides of glycoproteins. It cleaves asparagine from N-acetylglucosamines as one of the final steps in the lysosomal breakdown of glycoproteins. Mutations in this gene are associated with the lysosomal storage disease aspartylglycosaminuria that results in progressive neurodegeneration. Alternative splicing results in multiple transcript variants, at least one of which encodes an isoform that is subject to proteolytic processing.

Immunogen information

Gene ID:

175

Uniprot

P20933

Synonyms:

AGA; AGU; ASRG; GA

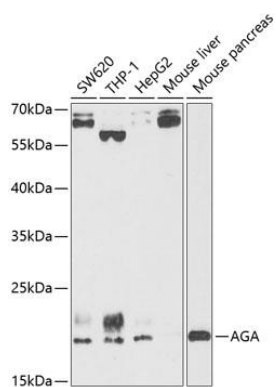
Immunogen:

Recombinant fusion protein containing a sequence corresponding to amino acids 24-346 of human AGA (NP_000018.2).

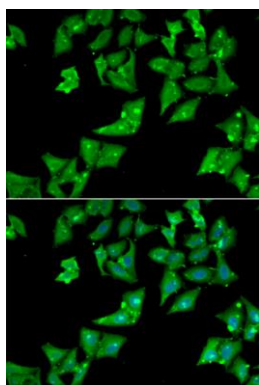
Storage:

Store at -20°C. Avoid freeze / thaw cycles. Buffer: PBS with 0.02% sodium azide, 50% glycerol, pH7.3.

Product Images



Western blot analysis of extracts of various cell lines, using AGA antibody (CAB13942) at 1:1000 dilution. Secondary antibody: HRP Goat Anti-Rabbit IgG (H+L) (CABS014) at 1:10000 dilution. Lysates/proteins: 25ug per lane. Blocking buffer: 3% nonfat dry milk in TBST. Detection: ECL Basic Kit (CABM00020). Exposure time: 90s.



Immunofluorescence analysis of HeLa cells using AGA antibody (CAB13942). Blue: DAPI for nuclear staining.