

AKR1B1 Rabbit Polyclonal Antibody



CAB13944

Product Information

Size:

20uL, 50uL, 100uL, 200uL

Observed MW:

36.5kDa

Calculated MW:

35kDa

Applications:

WB IHC

Reactivity:

Human, Mouse, Rat

Antibody Information

Recommended dilutions:

WB 1:500 - 1:2000 IHC 1:50
- 1:200

Source:

Rabbit

Isotype:

IgG

Purification:

Affinity purification

Protein Background

This gene encodes a member of the aldo/keto reductase superfamily, which consists of more than 40 known enzymes and proteins. This member catalyzes the reduction of a number of aldehydes, including the aldehyde form of glucose, and is thereby implicated in the development of diabetic complications by catalyzing the reduction of glucose to sorbitol. Multiple pseudogenes have been identified for this gene. The nomenclature system used by the HUGO Gene Nomenclature Committee to define human aldo-keto reductase family members is known to differ from that used by the Mouse Genome Informatics database.

Immunogen information

Gene ID:

231

Uniprot

P15121

Synonyms:

AKR1B1; ADR; ALDR1; ALR2; AR

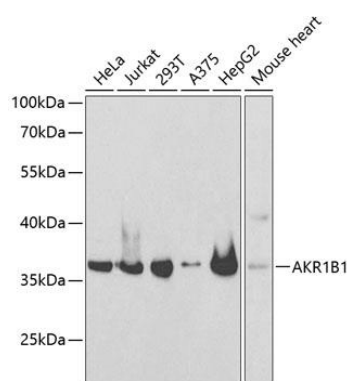
Immunogen:

Recombinant fusion protein containing a sequence corresponding to amino acids 1-316 of human AKR1B1 (NP_001619.1).

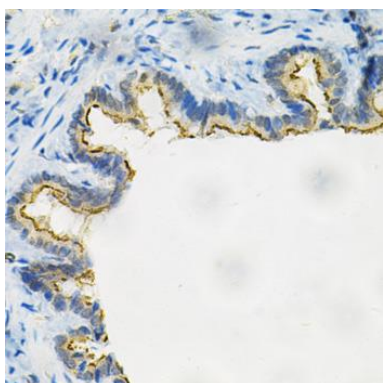
Storage:

Store at -20°C. Avoid freeze / thaw cycles. Buffer: PBS with 0.02% sodium azide, 50% glycerol, pH7.3.

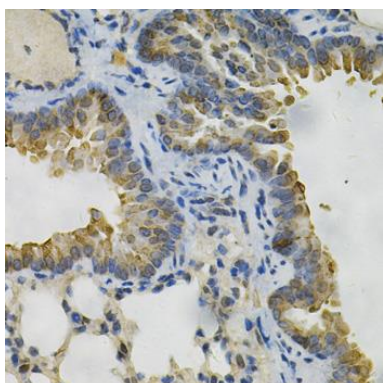
Product Images



Western blot analysis of extracts of various cell lines, using AKR1B1 antibody (CAB13944) at 1:1000 dilution. Secondary antibody: HRP Goat Anti-Rabbit IgG (H+L) (CABS014) at 1:10000 dilution. Lysates/proteins: 25ug per lane. Blocking buffer: 3% nonfat dry milk in TBST.



Immunohistochemistry of paraffin-embedded rat lung using AKR1B1 Antibody (CAB13944) at dilution of 1:100 (40x lens).



Immunohistochemistry of paraffin-embedded mouse lung using AKR1B1 Antibody (CAB13944) at dilution of 1:100 (40x lens).