

APRT Rabbit Polyclonal Antibody



CAB13946

Product Information

Size:

20uL, 50uL, 100uL, 200uL

Observed MW:

19-22kDa

Calculated MW:

14kDa/19kDa

Applications:

WB IHC IF

Reactivity:

Human, Mouse, Rat

Antibody Information

Recommended dilutions:

WB 1:500 - 1:2000 IHC 1:50
- 1:200 IF 1:50 - 1:200

Source:

Rabbit

Isotype:

IgG

Purification:

Affinity purification

Protein Background

Adenine phosphoribosyltransferase belongs to the purine/pyrimidine phosphoribosyltransferase family. A conserved feature of this gene is the distribution of CpG dinucleotides. This enzyme catalyzes the formation of AMP and inorganic pyrophosphate from adenine and 5-phosphoribosyl-1-pyrophosphate (PRPP). It also produces adenine as a by-product of the polyamine biosynthesis pathway. A homozygous deficiency in this enzyme causes 2, 8-dihydroxyadenine urolithiasis. Two transcript variants encoding different isoforms have been found for this gene.

Immunogen information

Gene ID:

353

Uniprot

P07741

Synonyms:

APRT; AMP; APRTD

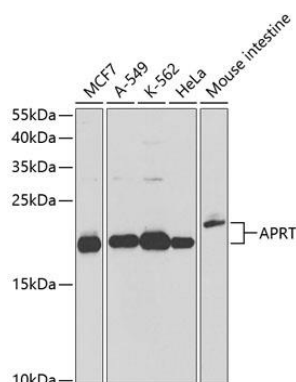
Immunogen:

Recombinant fusion protein containing a sequence corresponding to amino acids 1-180 of human APRT (NP_000476.1).

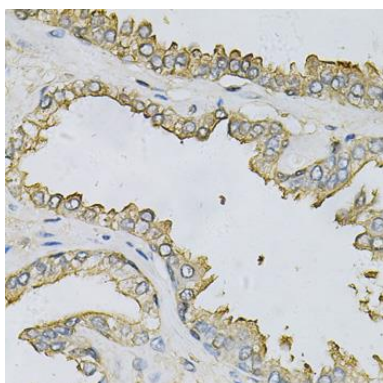
Storage:

Store at -20°C. Avoid freeze / thaw cycles. Buffer: PBS with 0.02% sodium azide, 50% glycerol, pH7.3.

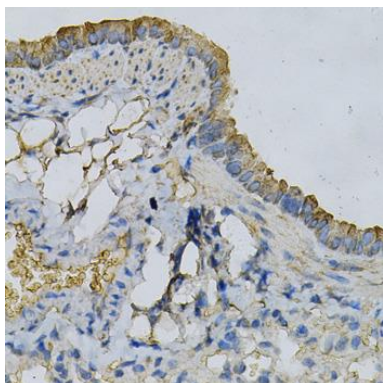
Product Images



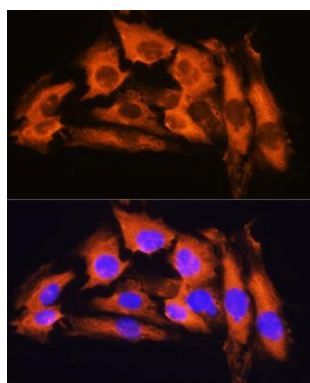
Western blot analysis of extracts of various cell lines, using APRT antibody (CAB13946) at 1:1000 dilution. Secondary antibody: HRP Goat Anti-Rabbit IgG (H+L) (CABS014) at 1:10000 dilution. Lysates/proteins: 25ug per lane. Blocking buffer: 3% nonfat dry milk in TBST. Detection: ECL Basic Kit (CABM00020). Exposure time: 10s.



Immunohistochemistry of paraffin-embedded human prostate using APRT Antibody (CAB13946) at dilution of 1:100 (40x lens).



Immunohistochemistry of paraffin-embedded mouse lung using APRT Antibody (CAB13946) at dilution of 1:100 (40x lens).



Immunofluorescence analysis of C6 cells using APRT Rabbit pAb (CAB13946) at dilution of 1:100. Blue: DAPI for nuclear staining.