

# COMP Rabbit Polyclonal Antibody



CAB13963

## Product Information

### Size:

20uL, 50uL, 100uL, 200uL

### Observed MW:

105kDa

### Calculated MW:

77kDa/82kDa

### Applications:

WB IHC IF

### Reactivity:

Human, Mouse, Rat

## Protein Background

The protein encoded by this gene is a noncollagenous extracellular matrix (ECM) protein. It consists of five identical glycoprotein subunits, each with EGF-like and calcium-binding (thrombospondin-like) domains. Oligomerization results from formation of a five-stranded coiled coil and disulfides. Binding to other ECM proteins such as collagen appears to depend on divalent cations. Contraction or expansion of a 5 aa aspartate repeat and other mutations can cause pseudoachondroplasia (PSACH) and multiple epiphyseal dysplasia (MED).

## Immunogen information

### Gene ID:

1311

### Uniprot

P49747

### Synonyms:

COMP; EDM1; EPD1; MED; PSACH; THBS5; TSP5

## Antibody Information

### Recommended dilutions:

WB 1:500 - 1:2000 IHC 1:50  
- 1:200 IF 1:50 - 1:200

### Source:

Rabbit

### Isotype:

IgG

### Purification:

Affinity purification

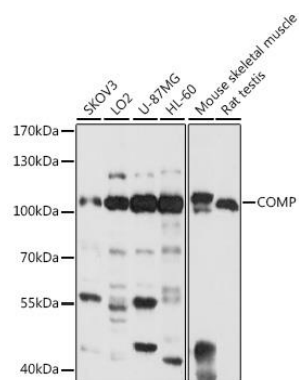
### Immunogen:

Recombinant fusion protein containing a sequence corresponding to amino acids 20-160 of human COMP (NP\_000086.2).

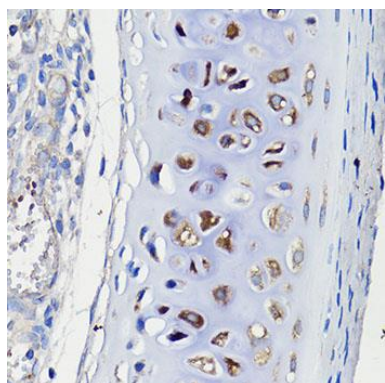
### Storage:

Store at -20°C. Avoid freeze / thaw cycles. Buffer: PBS with 0.02% sodium azide, 50% glycerol, pH7.3.

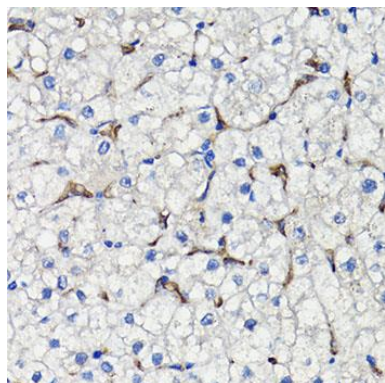
## Product Images



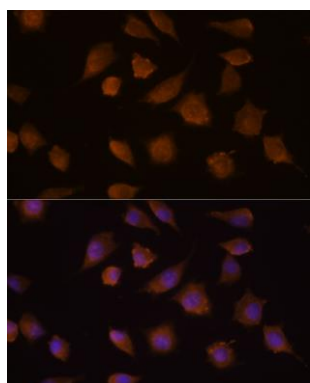
Western blot analysis of extracts of various cell lines, using COMP antibody (CAB13963) at 1:1000 dilution. Secondary antibody: HRP Goat Anti-Rabbit IgG (H+L) (CABS014) at 1:10000 dilution. Lysates/proteins: 25ug per lane. Blocking buffer: 3% nonfat dry milk in TBST. Detection: ECL Basic Kit (CABM00020). Exposure time: 1s.



Immunohistochemistry of paraffin-embedded rat trachea using COMP antibody (CAB13963) at dilution of 1:100 (40x lens).



Immunohistochemistry of paraffin-embedded human liver using COMP antibody (CAB13963) at dilution of 1:100 (40x lens).



Immunofluorescence analysis of L929 cells using COMP Rabbit pAb (CAB13963) at dilution of 1:100 (40x lens). Blue: DAPI for nuclear staining.