

# EDN3 Rabbit Polyclonal Antibody



CAB13974

## Product Information

### Size:

20uL, 50uL, 100uL, 200uL

### Observed MW:

### Calculated MW:

23kDa/25kDa

### Applications:

IHC

### Reactivity:

Mouse

## Antibody Information

### Recommended dilutions:

IHC 1:50 - 1:200

### Source:

Rabbit

### Isotype:

IgG

### Purification:

Affinity purification

## Protein Background

The protein encoded by this gene is a member of the endothelin family. Endothelins are endothelium-derived vasoactive peptides involved in a variety of biological functions. The active form of this protein is a 21 amino acid peptide processed from the precursor protein. The active peptide is a ligand for endothelin receptor type B (EDNRB). The interaction of this endothelin with EDNRB is essential for development of neural crest-derived cell lineages, such as melanocytes and enteric neurons. Mutations in this gene and EDNRB have been associated with Hirschsprung disease (HSCR) and Waardenburg syndrome (WS), which are congenital disorders involving neural crest-derived cells. Altered expression of this gene is implicated in tumorigenesis. Alternative splicing results in multiple transcript variants encoding different isoforms.

## Immunogen information

### Gene ID:

1908

### Uniprot

P14138

### Synonyms:

EDN3; ET-3; ET3; HSCR4; PPET3; WS4B

### Immunogen:

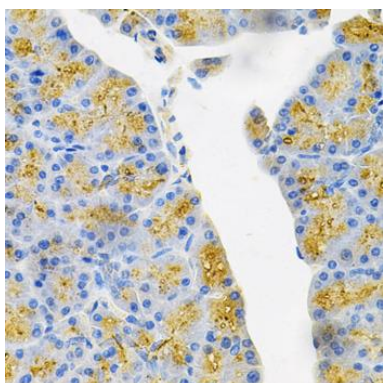
Recombinant fusion protein containing a sequence corresponding to amino acids 17-238 of human EDN3 (NP\_996917.1).

### Storage:

Store at -20°C. Avoid freeze / thaw cycles. Buffer: PBS with 0.02% sodium azide, 50% glycerol, pH7.3.

## Product Images

---



Immunohistochemistry of paraffin-embedded mouse pancreas using EDN3 Antibody (CAB13974) at dilution of 1:100 (40x lens).