

# ERBB3 Rabbit Polyclonal Antibody



CAB13976

## Product Information

### Size:

20uL, 50uL, 100uL, 200uL

### Observed MW:

### Calculated MW:

20kDa/36kDa/77kDa/141kDa  
/148kDa

### Applications:

IHC

### Reactivity:

Mouse, Rat

## Antibody Information

### Recommended dilutions:

IHC 1:50 - 1:200

### Source:

Rabbit

### Isotype:

IgG

### Purification:

Affinity purification

## Protein Background

This gene encodes a member of the epidermal growth factor receptor (EGFR) family of receptor tyrosine kinases. This membrane-bound protein has a neuregulin binding domain but not an active kinase domain. It therefore can bind this ligand but not convey the signal into the cell through protein phosphorylation. However, it does form heterodimers with other EGF receptor family members which do have kinase activity. Heterodimerization leads to the activation of pathways which lead to cell proliferation or differentiation. Amplification of this gene and/or overexpression of its protein have been reported in numerous cancers, including prostate, bladder, and breast tumors. Alternate transcriptional splice variants encoding different isoforms have been characterized. One isoform lacks the intermembrane region and is secreted outside the cell. This form acts to modulate the activity of the membrane-bound form. Additional splice variants have also been reported, but they have not been thoroughly characterized.

## Immunogen information

### Gene ID:

2065

### Uniprot

P21860

### Synonyms:

ERBB3; ErbB-3; HER3; LCCS2; MDA-BF-1; c-erbB-3; c-erbB3; erbB3-S; p180-ErbB3; p45-sErbB3; p85-sErbB3

### Immunogen:

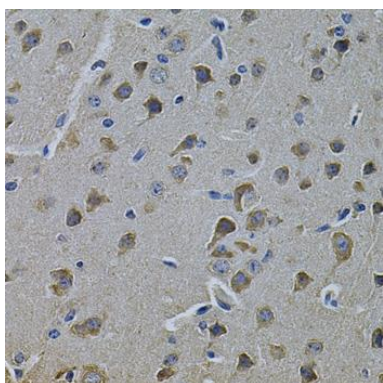
Recombinant fusion protein containing a sequence corresponding to amino acids 20-285 of human ERBB3 (NP\_001973.2).

### Storage:

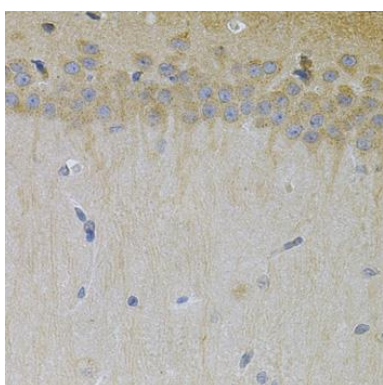
Store at -20°C. Avoid freeze / thaw cycles. Buffer: PBS with 0.02% sodium azide, 50% glycerol, pH7.3.

## Product Images

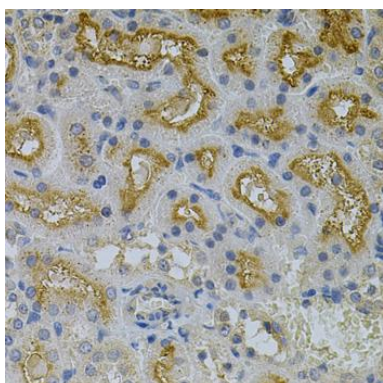
---



Immunohistochemistry of paraffin-embedded rat brain using ERBB3 Antibody (CAB13976) at dilution of 1:100 (40x lens).



Immunohistochemistry of paraffin-embedded mouse brain using ERBB3 Antibody (CAB13976) at dilution of 1:100 (40x lens).



Immunohistochemistry of paraffin-embedded mouse kidney using ERBB3 Antibody (CAB13976) at dilution of 1:100 (40x lens).