

# EWSR1 Rabbit Polyclonal Antibody



CAB13978

## Product Information

### Size:

20uL, 50uL, 100uL, 200uL

### Observed MW:

### Calculated MW:

37kDa/61kDa/62kDa/68kDa

### Applications:

IF

### Reactivity:

Human

## Antibody Information

### Recommended dilutions:

IF 1:50 - 1:100

### Source:

Rabbit

### Isotype:

IgG

### Purification:

Affinity purification

## Protein Background

This gene encodes a multifunctional protein that is involved in various cellular processes, including gene expression, cell signaling, and RNA processing and transport. The protein includes an N-terminal transcriptional activation domain and a C-terminal RNA-binding domain. Chromosomal translocations between this gene and various genes encoding transcription factors result in the production of chimeric proteins that are involved in tumorigenesis. These chimeric proteins usually consist of the N-terminal transcriptional activation domain of this protein fused to the C-terminal DNA-binding domain of the transcription factor protein. Mutations in this gene, specifically a t(11;22)(q24;q12) translocation, are known to cause Ewing sarcoma as well as neuroectodermal and various other tumors. Alternative splicing of this gene results in multiple transcript variants. Related pseudogenes have been identified on chromosomes 1 and 14.

## Immunogen information

### Gene ID:

2130

### Uniprot

Q01844

### Synonyms:

EWSR1; EWS; EWS-FLI1; bK984G1.4

### Immunogen:

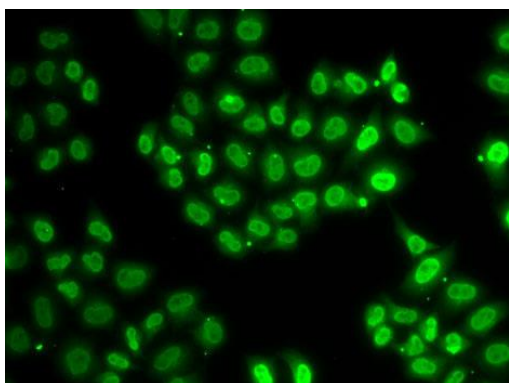
Recombinant fusion protein containing a sequence corresponding to amino acids 1-300 of human EWSR1 (NP\_001156757.1).

### Storage:

Store at -20°C. Avoid freeze / thaw cycles. Buffer: PBS with 0.02% sodium azide, 50% glycerol, pH7.3.

## Product Images

---



Immunofluorescence analysis of U2OS cells using EWSR1 antibody (CAB13978).