

GPC3 Rabbit Polyclonal Antibody



CAB13988

Product Information

Size:

20uL, 50uL, 100uL, 200uL

Observed MW:

66kDa

Calculated MW:

59kDa/65kDa/68kDa

Applications:

WB IHC

Reactivity:

Human, Mouse, Rat

Antibody Information

Recommended dilutions:

WB 1:500 - 1:2000 IHC 1:50
- 1:200

Source:

Rabbit

Isotype:

IgG

Purification:

Affinity purification

Protein Background

Cell surface heparan sulfate proteoglycans are composed of a membrane-associated protein core substituted with a variable number of heparan sulfate chains. Members of the glypican-related integral membrane proteoglycan family (GRIPS) contain a core protein anchored to the cytoplasmic membrane via a glycosyl phosphatidylinositol linkage. These proteins may play a role in the control of cell division and growth regulation. The protein encoded by this gene can bind to and inhibit the dipeptidyl peptidase activity of CD26, and it can induce apoptosis in certain cell types. Deletion mutations in this gene are associated with Simpson-Golabi-Behmel syndrome, also known as Simpson dysmorphia syndrome. Alternative splicing results in multiple transcript variants.

Immunogen information

Gene ID:

2719

Uniprot

P51654

Synonyms:

GPC3; DGSX; GTR2-2; MXR7; OCI-5; SDYS; SGB; SGBS; SGBS1;
glypican-3

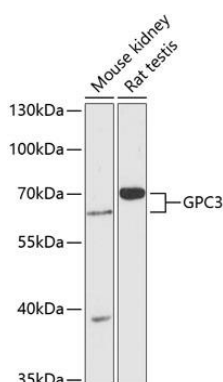
Immunogen:

Recombinant fusion protein containing a sequence corresponding to amino acids 290-550 of human GPC3 (NP_004475.1).

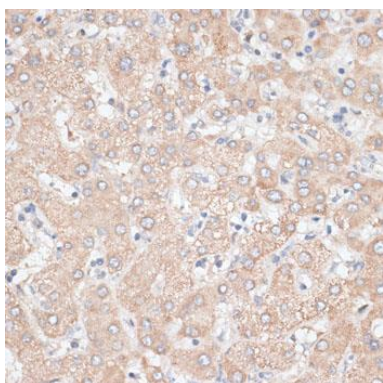
Storage:

Store at -20°C. Avoid freeze / thaw cycles. Buffer: PBS with 0.02% sodium azide, 50% glycerol, pH7.3.

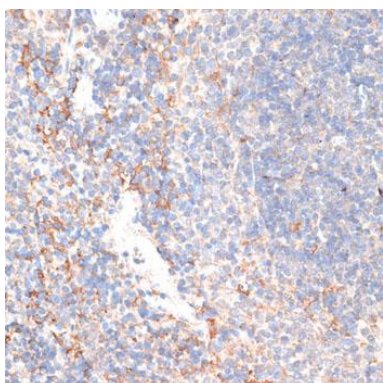
Product Images



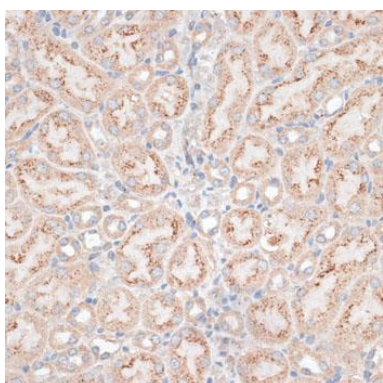
Western blot analysis of extracts of various cell lines, using GPC3 antibody (CAB13988) at 1:1000 dilution. Secondary antibody: HRP Goat Anti-Rabbit IgG (H+L) (CABS014) at 1:10000 dilution. Lysates/proteins: 25ug per lane. Blocking buffer: 3% nonfat dry milk in TBST. Detection: ECL Basic Kit (CABM00020). Exposure time: 90s.



Immunohistochemistry of paraffin-embedded human liver using GPC3 antibody (CAB13988) at dilution of 1:100 (40x lens).



Immunohistochemistry of paraffin-embedded mouse spleen using GPC3 antibody (CAB13988) at dilution of 1:100 (40x lens).



Immunohistochemistry of paraffin-embedded mouse kidney using GPC3 antibody (CAB13988) at dilution of 1:100 (40x lens).