

GRIN1 Rabbit Polyclonal Antibody



CAB13995

Product Information

Size:

20uL, 50uL, 100uL, 200uL

Observed MW:

Calculated MW:

99kDa/101kDa/103kDa/105kDa/106kDa/107kDa

Applications:

IHC IF

Reactivity:

Human, Rat

Protein Background

The protein encoded by this gene is a critical subunit of N-methyl-D-aspartate receptors, members of the glutamate receptor channel superfamily which are heteromeric protein complexes with multiple subunits arranged to form a ligand-gated ion channel. These subunits play a key role in the plasticity of synapses, which is believed to underlie memory and learning. Cell-specific factors are thought to control expression of different isoforms, possibly contributing to the functional diversity of the subunits. Alternatively spliced transcript variants have been described.

Immunogen information

Gene ID:

2902

Uniprot

Q05586

Synonyms:

GRIN1; GluN1; MRD8; NMD-R1; NMDA1; NMDAR1; NR1; NMDA 1

Antibody Information

Recommended dilutions:

IHC 1:50 - 1:200 IF 1:50 - 1:200

Source:

Rabbit

Isotype:

IgG

Purification:

Affinity purification

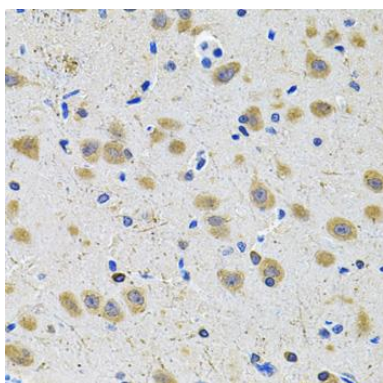
Immunogen:

A synthetic peptide of human GRIN1

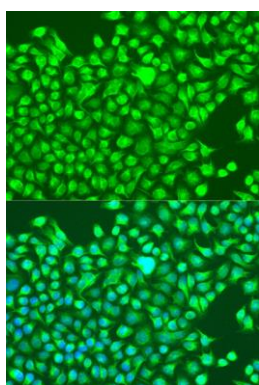
Storage:

Store at -20°C. Avoid freeze / thaw cycles. Buffer: PBS with 0.02% sodium azide, 50% glycerol, pH7.3.

Product Images



Immunohistochemistry of paraffin-embedded rat brain using GRIN1 Antibody (CAB13995) at dilution of 1:100 (40x lens).



Immunofluorescence analysis of U2OS cells using GRIN1 antibody (CAB13995) at dilution of 1:100. Blue: DAPI for nuclear staining.