

SP110 Rabbit Polyclonal Antibody



CAB14003

Product Information

Size:

20uL, 50uL, 100uL, 200uL

Observed MW:

80kDa

Calculated MW:

28kDa/46kDa/61kDa/62kDa/
78kDa/81kDa

Applications:

WB IHC

Reactivity:

Human, Mouse, Rat

Protein Background

The nuclear body is a multiprotein complex that may have a role in the regulation of gene transcription. This gene is a member of the SP100/SP140 family of nuclear body proteins and encodes a leukocyte-specific nuclear body component. The protein can function as an activator of gene transcription and may serve as a nuclear hormone receptor coactivator. In addition, it has been suggested that the protein may play a role in ribosome biogenesis and in the induction of myeloid cell differentiation. Alternative splicing has been observed for this gene and three transcript variants, encoding distinct isoforms, have been identified.

Immunogen information

Gene ID:

3431

Uniprot

Q9HB58

Synonyms:

SP110; IFI41; IFI75; IPR1; VODI

Antibody Information

Recommended dilutions:

WB 1:500 - 1:2000 IHC 1:50
- 1:200

Source:

Rabbit

Isotype:

IgG

Purification:

Affinity purification

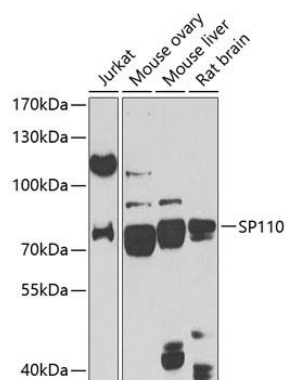
Immunogen:

Recombinant fusion protein containing a sequence corresponding to amino acids 1-290 of human SP110 (NP_004501.3).

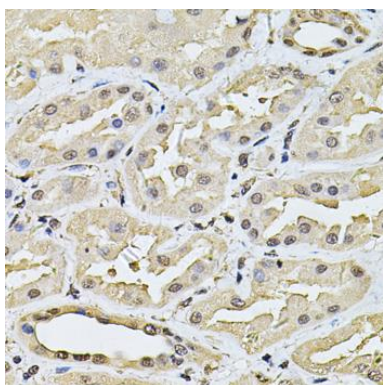
Storage:

Store at -20°C. Avoid freeze / thaw cycles. Buffer: PBS with 0.02% sodium azide, 50% glycerol, pH7.3.

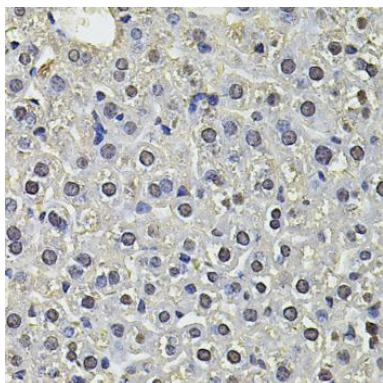
Product Images



Western blot analysis of extracts of various cell lines, using SP110 antibody (CAB14003) at 1:1000 dilution. Secondary antibody: HRP Goat Anti-Rabbit IgG (H+L) (CABS014) at 1:10000 dilution. Lysates/proteins: 25ug per lane. Blocking buffer: 3% nonfat dry milk in TBST. Detection: ECL Basic Kit (CABM00020). Exposure time: 90s.



Immunohistochemistry of paraffin-embedded human kidney using SP110 Antibody (CAB14003) at dilution of 1:100 (40x lens).



Immunohistochemistry of paraffin-embedded mouse liver using SP110 Antibody (CAB14003) at dilution of 1:100 (40x lens).