

IGF2 Rabbit Polyclonal Antibody



CAB14005

Product Information

Size:

20uL, 50uL, 100uL, 200uL

Observed MW:

Calculated MW:

20kDa/26kDa

Applications:

IHC IF

Reactivity:

Human, Mouse, Rat

Protein Background

This gene encodes a member of the insulin family of polypeptide growth factors, which are involved in development and growth. It is an imprinted gene, expressed only from the paternal allele, and epigenetic changes at this locus are associated with Wilms tumour, Beckwith-Wiedemann syndrome, rhabdomyosarcoma, and Silver-Russell syndrome. A read-through INS-IGF2 gene exists, whose 5' region overlaps the INS gene and the 3' region overlaps this gene. Alternatively spliced transcript variants encoding different isoforms have been found for this gene.

Immunogen information

Gene ID:

3481

Uniprot

P01344

Synonyms:

IGF2; C11orf43; GRDF; IGF-II; PP9974

Antibody Information

Recommended dilutions:

IHC 1:50 - 1:200 IF 1:50 - 1:200

Source:

Rabbit

Isotype:

IgG

Purification:

Affinity purification

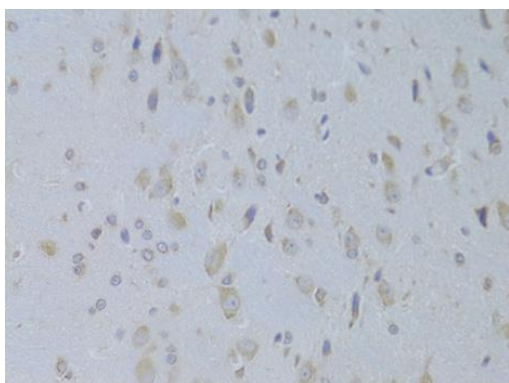
Immunogen:

Recombinant fusion protein containing a sequence corresponding to amino acids 25-180 of human IGF2 (NP_000603.1).

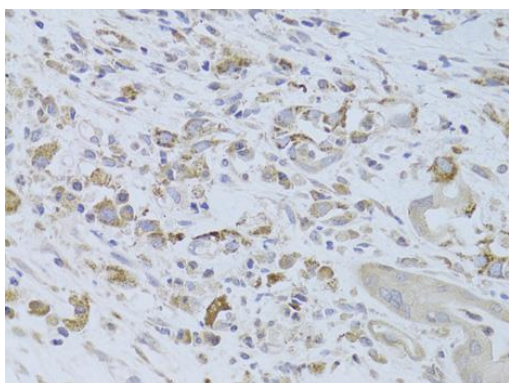
Storage:

Store at -20°C. Avoid freeze / thaw cycles. Buffer: PBS with 0.02% sodium azide, 50% glycerol, pH7.3.

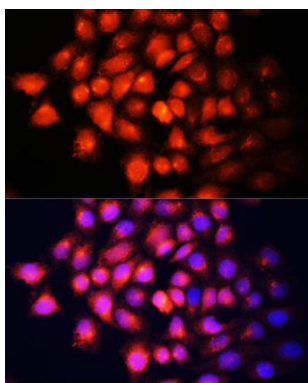
Product Images



Immunohistochemistry of paraffin-embedded rat brain using IGF2 Antibody (CAB14005) at dilution of 1:100 (40x lens).



Immunohistochemistry of paraffin-embedded human breast cancer using IGF2 Antibody (CAB14005) at dilution of 1:100 (40x lens).



Immunofluorescence analysis of HeLa cells using IGF2 Polyclonal Antibody (CAB14005) at dilution of 1:100 (40x lens). Blue: DAPI for nuclear staining.