

# IP3R Rabbit Polyclonal Antibody



CAB14008

## Product Information

### Size:

20uL, 50uL, 100uL, 200uL

### Observed MW:

315kDa

### Calculated MW:

306-313kDa

### Applications:

WB IF

### Reactivity:

Human, Mouse, Rat

## Protein Background

This gene encodes an intracellular receptor for inositol 1, 4, 5-trisphosphate. Upon stimulation by inositol 1, 4, 5-trisphosphate, this receptor mediates calcium release from the endoplasmic reticulum. Mutations in this gene cause spinocerebellar ataxia type 15, a disease associated with an heterogeneous group of cerebellar disorders. Multiple transcript variants have been identified for this gene.

## Immunogen information

### Gene ID:

3708

### Uniprot

Q14643

### Synonyms:

ITPR1; ACV; CLA4; INSP3R1; IP3R; IP3R1; PPP1R94; SCA15; SCA16; SCA29

## Antibody Information

### Recommended dilutions:

WB 1:500 - 1:2000 IF 1:50 - 1:200

### Source:

Rabbit

### Isotype:

IgG

### Purification:

Affinity purification

### Immunogen:

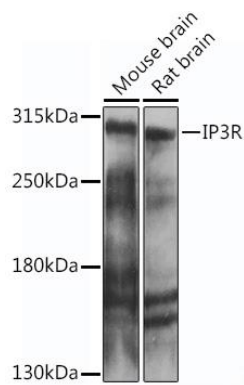
Recombinant fusion protein containing a sequence corresponding to amino acids 1100-1250 of human IP3R (NP\_001161744.1).

### Storage:

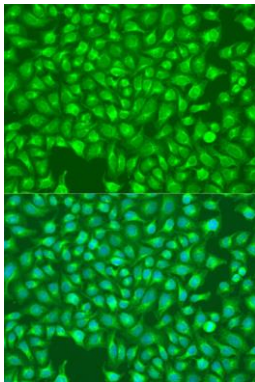
Store at -20°C. Avoid freeze / thaw cycles. Buffer: PBS with 0.02% sodium azide, 50% glycerol, pH7.3.

## Product Images

---



Western blot analysis of extracts of various cell lines, using IP3R antibody (CAB14008) at 1:1000 dilution. Secondary antibody: HRP Goat Anti-Rabbit IgG (H+L) (CABS014) at 1:10000 dilution. Lysates/proteins: 25ug per lane. Blocking buffer: 3% nonfat dry milk in TBST. Detection: ECL Enhanced Kit (CABM00021). Exposure time: 10s.



Immunofluorescence analysis of U2OS cells using IP3R antibody (CAB14008) at dilution of 1:100. Blue: DAPI for nuclear staining.