

# TNPO1 Rabbit Polyclonal Antibody



**CAB14015**

---

## Product Information

### Size:

20uL, 50uL, 100uL, 200uL

### Observed MW:

102kDa

### Calculated MW:

96kDa/101kDa/102kDa

### Applications:

WB

### Reactivity:

Human, Mouse, Rat

## Antibody Information

### Recommended dilutions:

WB 1:500 - 1:2000

### Source:

Rabbit

### Isotype:

IgG

### Purification:

Affinity purification

## Protein Background

This gene encodes the beta subunit of the karyopherin receptor complex which interacts with nuclear localization signals to target nuclear proteins to the nucleus. The karyopherin receptor complex is a heterodimer of an alpha subunit which recognizes the nuclear localization signal and a beta subunit which docks the complex at nucleoporins. Alternate splicing of this gene results in two transcript variants encoding different proteins.

## Immunogen information

### Gene ID:

3842

### Uniprot

Q92973

### Synonyms:

TNPO1; IPO2; KPNB2; MIP; MIP1; TRN

### Immunogen:

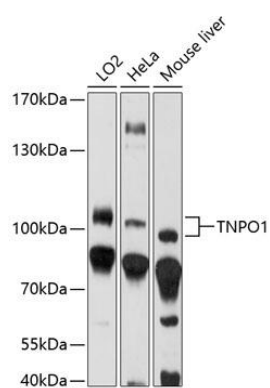
A synthetic peptide corresponding to a sequence within amino acids 800 to the C-terminus of human TNPO1 (NP\_002261.3).

### Storage:

Store at -20°C. Avoid freeze / thaw cycles. Buffer: PBS with 0.02% sodium azide, 50% glycerol, pH7.3.

## Product Images

---



Western blot analysis of extracts of various cell lines, using TNPO1 antibody (CAB14015) at 1:1000 dilution. Secondary antibody: HRP Goat Anti-Rabbit IgG (H+L) (CABS014) at 1:10000 dilution. Lysates/proteins: 25ug per lane. Blocking buffer: 3% nonfat dry milk in TBST. Detection: ECL Enhanced Kit (CABM00021). Exposure time: 5s.