

STMN1 Rabbit Polyclonal Antibody



CAB14018

Product Information

Size:

20uL, 50uL, 100uL, 200uL

Observed MW:

17kDa

Calculated MW:

17kDa/19kDa

Applications:

WB IHC IF

Reactivity:

Human, Mouse

Antibody Information

Recommended dilutions:

WB 1:500 - 1:2000 IHC 1:50
- 1:200 IF 1:50 - 1:100

Source:

Rabbit

Isotype:

IgG

Purification:

Affinity purification

Protein Background

This gene belongs to the stathmin family of genes. It encodes a ubiquitous cytosolic phosphoprotein proposed to function as an intracellular relay integrating regulatory signals of the cellular environment. The encoded protein is involved in the regulation of the microtubule filament system by destabilizing microtubules. It prevents assembly and promotes disassembly of microtubules. Multiple transcript variants encoding different isoforms have been found for this gene.

Immunogen information

Gene ID:

3925

Uniprot

P16949

Synonyms:

STMN1; C1orf215; LAP18; Lag; OP18; PP17; PP19; PR22; SMN;
stathmin

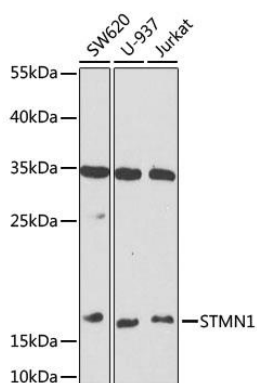
Immunogen:

Recombinant fusion protein containing a sequence corresponding to amino acids 1-149 of human STMN1 (NP_981944.1).

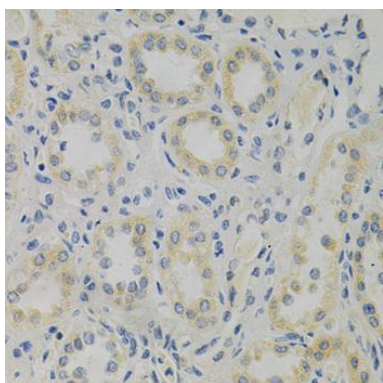
Storage:

Store at -20°C. Avoid freeze / thaw cycles. Buffer: PBS with 0.02% sodium azide, 50% glycerol, pH7.3.

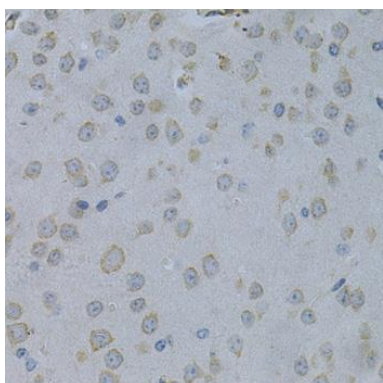
Product Images



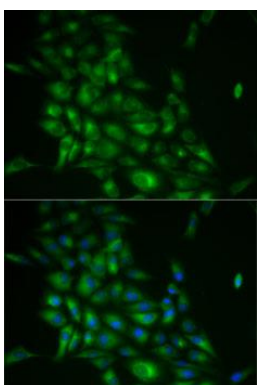
Western blot analysis of extracts of various cell lines, using STMN1 antibody (CAB14018) at 1:1000 dilution. Secondary antibody: HRP Goat Anti-Rabbit IgG (H+L) (CABS014) at 1:10000 dilution. Lysates/proteins: 25ug per lane. Blocking buffer: 3% nonfat dry milk in TBST. Detection: ECL Basic Kit (CABM00020).



Immunohistochemistry of paraffin-embedded human kidney cancer using STMN1 Antibody (CAB14018) at dilution of 1:200 (40x lens).



Immunohistochemistry of paraffin-embedded mouse brain using STMN1 Antibody (CAB14018) at dilution of 1:200 (40x lens).



Immunofluorescence analysis of HeLa cells using STMN1 antibody (CAB14018). Blue: DAPI for nuclear staining.