

# Smad5 Rabbit Polyclonal Antibody



CAB14023

---

## Product Information

### Size:

20uL, 50uL, 100uL, 200uL

### Observed MW:

52kDa

### Calculated MW:

52kDa

### Applications:

WB IHC IF

### Reactivity:

Human, Mouse, Rat

## Protein Background

The protein encoded by this gene is involved in the transforming growth factor beta signaling pathway that results in an inhibition of the proliferation of hematopoietic progenitor cells. The encoded protein is activated by bone morphogenetic proteins type 1 receptor kinase, and may be involved in cancer. Alternative splicing results in multiple transcript variants.

## Immunogen information

### Gene ID:

4090

### Uniprot

Q99717

### Synonyms:

DWFC; JV5-1; MADH5; SMAD5

## Antibody Information

### Recommended dilutions:

WB 1:500 - 1:2000 IHC 1:50  
- 1:200 IF 1:50 - 1:200

### Source:

Rabbit

### Isotype:

IgG

### Purification:

Affinity purification

### Immunogen:

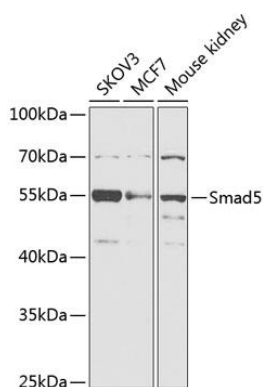
Recombinant fusion protein containing a sequence corresponding to amino acids 186-465 of human Smad5 (NP\_001001420.1).

### Storage:

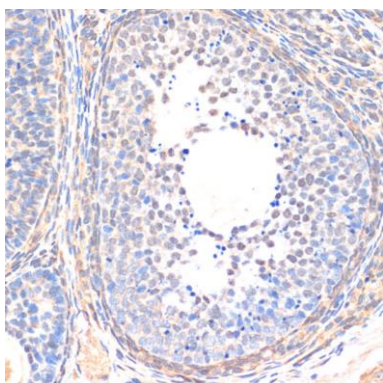
Store at -20°C. Avoid freeze / thaw cycles. Buffer: PBS with 0.02% sodium azide, 50% glycerol, pH7.3.

## Product Images

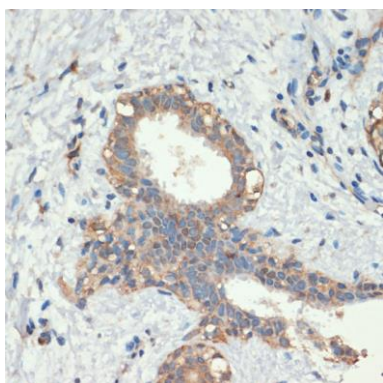
---



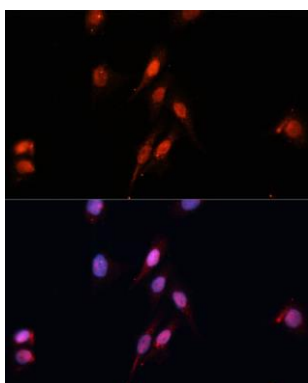
Western blot analysis of extracts of various cell lines, using Smad5 antibody (CAB14023) at 1:1000 dilution. Secondary antibody: HRP Goat Anti-Rabbit IgG (H+L) (CABS014) at 1:10000 dilution. Lysates/proteins: 25ug per lane. Blocking buffer: 3% nonfat dry milk in TBST. Detection: ECL Basic Kit (CABM00020). Exposure time: 30s.



Immunohistochemistry of paraffin-embedded rat ovary using SMAD5 antibody (CAB14023) at dilution of 1:200 (40x lens).



Immunohistochemistry of paraffin-embedded human breast cancer using SMAD5 antibody (CAB14023) at dilution of 1:200 (40x lens).



Immunofluorescence analysis of HeLa cells using Smad5 Polyclonal Antibody (CAB14023) at dilution of 1:100 (40x lens). Blue: DAPI for nuclear staining.