

# NTRK3 Rabbit Polyclonal Antibody



CAB14033

## Product Information

### Size:

20uL, 50uL, 100uL, 200uL

### Observed MW:

115kDa

### Calculated MW:

68kDa/91kDa/92kDa/93kDa/  
94kDa

### Applications:

WB IHC

### Reactivity:

Human, Mouse, Rat

## Antibody Information

### Recommended dilutions:

WB 1:500 - 1:2000 IHC 1:50  
- 1:200

### Source:

Rabbit

### Isotype:

IgG

### Purification:

Affinity purification

## Protein Background

This gene encodes a member of the neurotrophic tyrosine receptor kinase (NTRK) family. This kinase is a membrane-bound receptor that, upon neurotrophin binding, phosphorylates itself and members of the MAPK pathway. Signalling through this kinase leads to cell differentiation and may play a role in the development of proprioceptive neurons that sense body position. Mutations in this gene have been associated with medulloblastomas, secretory breast carcinomas and other cancers. Several transcript variants encoding different isoforms have been found for this gene.

## Immunogen information

### Gene ID:

4916

### Uniprot

Q16288

### Synonyms:

NTRK3; GP145-TrkC; TRKC; gp145(trkC)

### Immunogen:

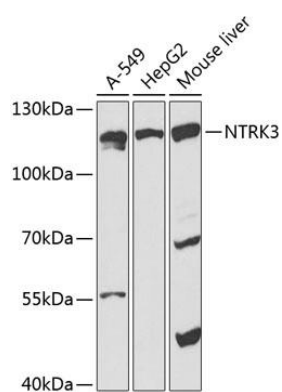
Recombinant fusion protein containing a sequence corresponding to amino acids 40-300 of human NTRK3 (NP\_001007157.1).

### Storage:

Store at -20°C. Avoid freeze / thaw cycles. Buffer: PBS with 0.02% sodium azide, 50% glycerol, pH7.3.

## Product Images

---



Western blot analysis of extracts of various cell lines, using NTRK3 antibody (CAB14033) at 1:1000 dilution. Secondary antibody: HRP Goat Anti-Rabbit IgG (H+L) (CABS014) at 1:10000 dilution. Lysates/proteins: 25ug per lane. Blocking buffer: 3% nonfat dry milk in TBST. Detection: ECL Basic Kit (CABM00020). Exposure time: 90s.