

# OPRK1 Rabbit Polyclonal Antibody



CAB14035

---

## Product Information

### Size:

20uL, 50uL, 100uL, 200uL

### Observed MW:

40kDa

### Calculated MW:

33kDa/42kDa

### Applications:

WB IHC IF

### Reactivity:

Human, Mouse, Rat

## Antibody Information

### Recommended dilutions:

WB 1:500 - 1:2000 IHC 1:50  
- 1:200 IF 1:50 - 1:200

### Source:

Rabbit

### Isotype:

IgG

### Purification:

Affinity purification

## Protein Background

This gene encodes an opioid receptor, which is a member of the 7 transmembrane-spanning G protein-coupled receptor family. It functions as a receptor for endogenous ligands, as well as a receptor for various synthetic opioids. Ligand binding results in inhibition of adenylate cyclase activity and neurotransmitter release. This opioid receptor plays a role in the perception of pain and mediating the hypolocomotor, analgesic and aversive actions of synthetic opioids. Variations in this gene have also been associated with alcohol dependence and opiate addiction. Alternatively spliced transcript variants encoding different isoforms have been found for this gene. A recent study provided evidence for translational readthrough in this gene and expression of an additional C-terminally extended isoform via the use of an alternative in-frame translation termination codon.

## Immunogen information

### Gene ID:

4986

### Uniprot

P41145

### Synonyms:

OPRK1; K-OR-1; KOR; KOR-1; OPRK

### Immunogen:

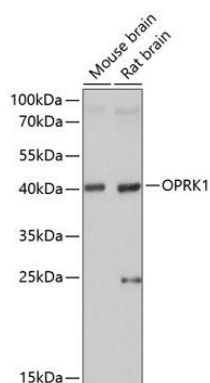
A synthetic peptide corresponding to a sequence within amino acids 300 to the C-terminus of human OPRK1 (NP\_000903.2).

### Storage:

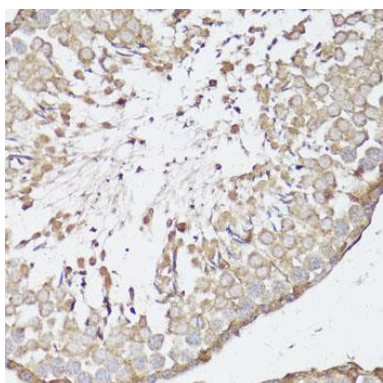
Store at -20°C. Avoid freeze / thaw cycles. Buffer: PBS with 0.02% sodium azide, 50% glycerol, pH7.3.

## Product Images

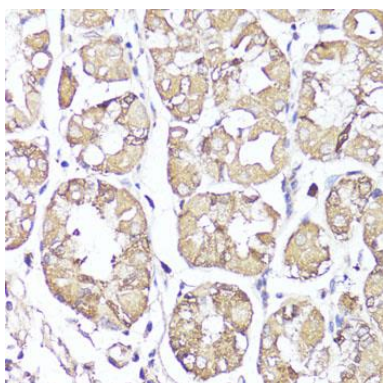
---



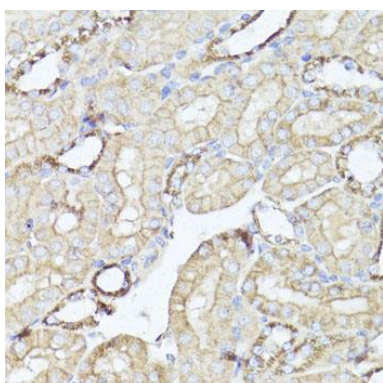
Western blot analysis of extracts of various cell lines, using OPRK1 antibody (CAB14035) at 1:1000 dilution. Secondary antibody: HRP Goat Anti-Rabbit IgG (H+L) (CABS014) at 1:10000 dilution. Lysates/proteins: 25ug per lane. Blocking buffer: 3% nonfat dry milk in TBST. Detection: ECL Basic Kit (CABM00020). Exposure time: 5s.



Immunohistochemistry of paraffin-embedded rat testis using OPRK1 antibody (CAB14035) at dilution of 1:100 (40x lens).



Immunohistochemistry of paraffin-embedded human stomach using OPRK1 antibody (CAB14035) at dilution of 1:100 (40x lens).



Immunohistochemistry of paraffin-embedded mouse kidney using OPRK1 antibody (CAB14035) at dilution of 1:100 (40x lens).