

OTX2 Rabbit Polyclonal Antibody



CAB14036

Product Information

Size:

20uL, 50uL, 100uL, 200uL

Observed MW:

Refer to figures

Calculated MW:

31kDa/32kDa

Applications:

IHC IF

Reactivity:

Mouse, Rat

Antibody Information

Recommended dilutions:

IHC 1:50 - 1:100 IF 1:50 - 1:100

Source:

Rabbit

Isotype:

IgG

Purification:

Affinity purification

Protein Background

This gene encodes a member of the bicoid subfamily of homeodomain-containing transcription factors. The encoded protein acts as a transcription factor and plays a role in brain, craniofacial, and sensory organ development. The encoded protein also influences the proliferation and differentiation of dopaminergic neuronal progenitor cells during mitosis. Mutations in this gene cause syndromic microphthalmia 5 (MCOPS5) and combined pituitary hormone deficiency 6 (CPHD6). This gene is also suspected of having an oncogenic role in medulloblastoma. Alternative splicing results in multiple transcript variants encoding distinct isoforms. Pseudogenes of this gene are known to exist on chromosomes two and nine.

Immunogen information

Gene ID:

5015

Uniprot

P32243

Synonyms:

OTX2; CPHD6; MCOPS5

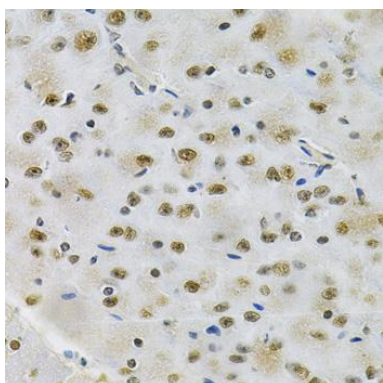
Immunogen:

Recombinant fusion protein containing a sequence corresponding to amino acids 140-280 of human OTX2 (NP_068374.1).

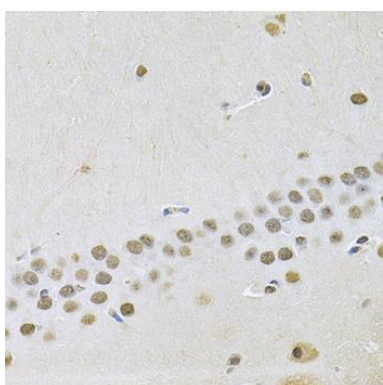
Storage:

Store at -20°C. Avoid freeze / thaw cycles. Buffer: PBS with 0.02% sodium azide, 50% glycerol, pH7.3.

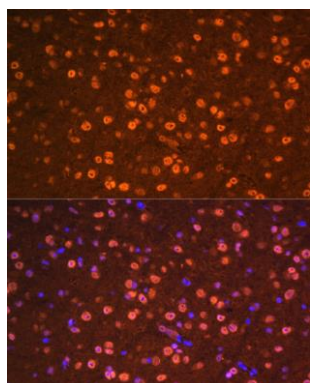
Product Images



Immunohistochemistry of paraffin-embedded rat brain using OTX2 Antibody (CAB14036) at dilution of 1:100 (40x lens).



Immunohistochemistry of paraffin-embedded mouse brain using OTX2 Antibody (CAB14036) at dilution of 1:100 (40x lens).



Immunofluorescence analysis of mouse brain cells using OTX2 antibody (CAB14036) at dilution of 1:100. Blue: DAPI for nuclear staining.