

# PGK1 Rabbit Polyclonal Antibody



CAB14039

## Product Information

### Size:

20uL, 50uL, 100uL, 200uL

### Observed MW:

44kDa

### Calculated MW:

41kDa/44kDa

### Applications:

WB IHC

### Reactivity:

Human, Mouse, Rat

## Antibody Information

### Recommended dilutions:

WB 1:500 - 1:2000 IHC 1:50  
- 1:200

### Source:

Rabbit

### Isotype:

IgG

### Purification:

Affinity purification

## Protein Background

The protein encoded by this gene is a glycolytic enzyme that catalyzes the conversion of 1, 3-diphosphoglycerate to 3-phosphoglycerate. The encoded protein may also act as a cofactor for polymerase alpha. Additionally, this protein is secreted by tumor cells where it participates in angiogenesis by functioning to reduce disulfide bonds in the serine protease, plasmin, which consequently leads to the release of the tumor blood vessel inhibitor angiostatin. The encoded protein has been identified as a moonlighting protein based on its ability to perform mechanistically distinct functions. Deficiency of the enzyme is associated with a wide range of clinical phenotypes hemolytic anemia and neurological impairment. Pseudogenes of this gene have been defined on chromosomes 19, 21 and the X chromosome.

## Immunogen information

### Gene ID:

5230

### Uniprot

P00558

### Synonyms:

PGK1; HEL-S-68p; MIG10; PGKA

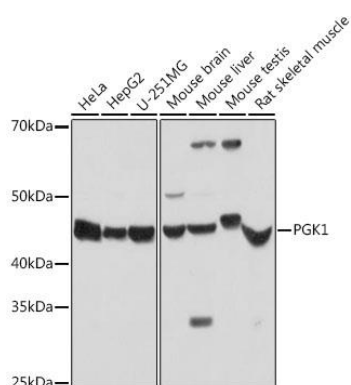
### Immunogen:

Recombinant fusion protein containing a sequence corresponding to amino acids 1-417 of human PGK1 (NP\_000282.1).

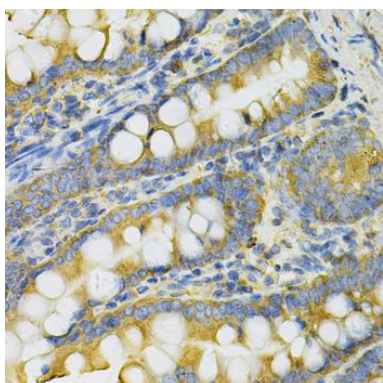
### Storage:

Store at -20°C. Avoid freeze / thaw cycles. Buffer: PBS with 0.02% sodium azide, 50% glycerol, pH7.3.

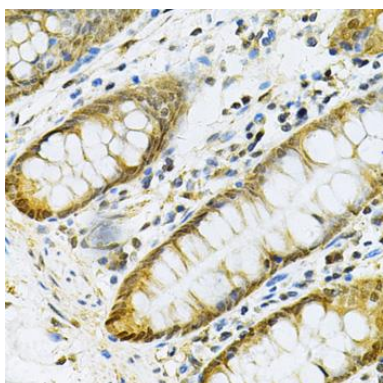
## Product Images



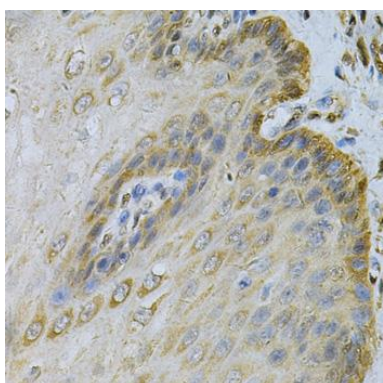
Western blot analysis of extracts of various cell lines, using PGK1 antibody (CAB14039) at 1:1000 dilution. Secondary antibody: HRP Goat Anti-Rabbit IgG (H+L) (CABS014) at 1:10000 dilution. Lysates/proteins: 25ug per lane. Blocking buffer: 3% nonfat dry milk in TBST. Detection: ECL Basic Kit (CABM00020). Exposure time: 60s.



Immunohistochemistry of paraffin-embedded rat intestine using PGK1 Antibody (CAB14039) at dilution of 1:100 (40x lens).



Immunohistochemistry of paraffin-embedded human colon using PGK1 Antibody (CAB14039) at dilution of 1:100 (40x lens).



Immunohistochemistry of paraffin-embedded human esophagus using PGK1 Antibody (CAB14039) at dilution of 1:100 (40x lens).