

SERPINB5 Rabbit Polyclonal Antibody



CAB14042

Product Information

Size:

20uL, 50uL, 100uL, 200uL

Observed MW:

43kDa

Calculated MW:

25kDa/42kDa

Applications:

WB IHC

Reactivity:

Human, Mouse

Antibody Information

Recommended dilutions:

WB 1:500 - 1:2000 IHC 1:50
- 1:200

Source:

Rabbit

Isotype:

IgG

Purification:

Affinity purification

Protein Background

Immunogen information

Gene ID:

5268

Uniprot

P36952

Synonyms:

SERPINB5; PI5; maspin; serpin B5

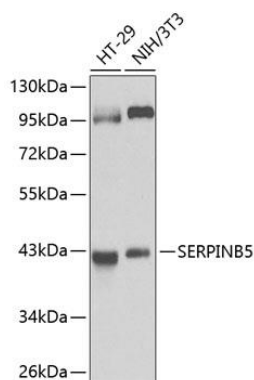
Immunogen:

Recombinant fusion protein containing a sequence corresponding to amino acids 21-189 of human SERPINB5 (NP_002630.2).

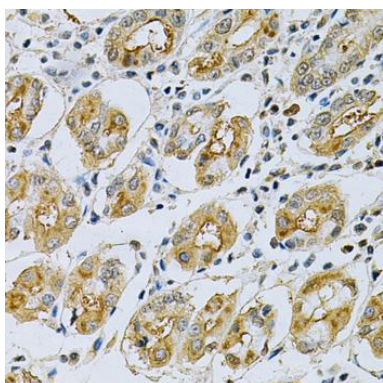
Storage:

Store at -20°C. Avoid freeze / thaw cycles. Buffer: PBS with 0.02% sodium azide, 50% glycerol, pH7.3.

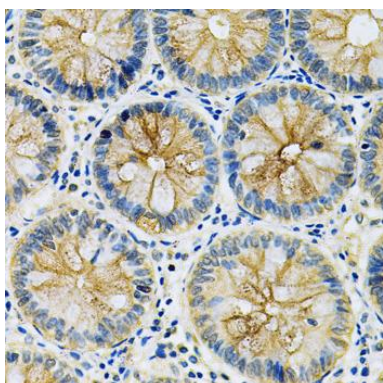
Product Images



Western blot analysis of extracts of various cell lines, using SERPINB5 antibody (CAB14042) at 1:1000 dilution. Secondary antibody: HRP Goat Anti-Rabbit IgG (H+L) (CABS014) at 1:10000 dilution. Lysates/proteins: 25ug per lane. Blocking buffer: 3% nonfat dry milk in TBST.



Immunohistochemistry of paraffin-embedded human stomach using SERPINB5 Antibody (CAB14042) at dilution of 1:200 (40x lens).



Immunohistochemistry of paraffin-embedded human rectum using SERPINB5 Antibody (CAB14042) at dilution of 1:200 (40x lens).