

PLOD1 Rabbit Polyclonal Antibody



CAB14044

Product Information

Size:

20uL, 50uL, 100uL, 200uL

Observed MW:

125kDa

Calculated MW:

83kDa/88kDa

Applications:

WB

Reactivity:

Mouse

Protein Background

Lysyl hydroxylase is a membrane-bound homodimeric protein localized to the cisternae of the endoplasmic reticulum. The enzyme (cofactors iron and ascorbate) catalyzes the hydroxylation of lysyl residues in collagen-like peptides. The resultant hydroxylysyl groups are attachment sites for carbohydrates in collagen and thus are critical for the stability of intermolecular crosslinks. Some patients with Ehlers-Danlos syndrome type VI have deficiencies in lysyl hydroxylase activity. Two transcript variants encoding different isoforms have been found for this gene.

Immunogen information

Gene ID:

5351

Uniprot

Q02809

Synonyms:

PLOD1; EDS6; LH; LH1; LLH; PLOD

Antibody Information

Recommended dilutions:

WB 1:500 - 1:2000

Source:

Rabbit

Isotype:

IgG

Purification:

Affinity purification

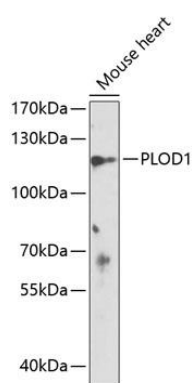
Immunogen:

Recombinant fusion protein containing a sequence corresponding to amino acids 488-727 of human PLOD1 (NP_000293.2).

Storage:

Store at -20°C. Avoid freeze / thaw cycles. Buffer: PBS with 0.02% sodium azide, 50% glycerol, pH7.3.

Product Images



Western blot analysis of extracts of mouse heart, using PLOD1 antibody (CAB14044) at 1:1000 dilution. Secondary antibody: HRP Goat Anti-Rabbit IgG (H+L) (CABS014) at 1:10000 dilution. Lysates/proteins: 25ug per lane. Blocking buffer: 3% nonfat dry milk in TBST. Detection: ECL Enhanced Kit (CABM00021). Exposure time: 60s.