

SULT2A1 Rabbit Polyclonal Antibody



CAB14063

Product Information

Size:

20uL, 50uL, 100uL, 200uL

Observed MW:

34kDa

Calculated MW:

33kDa

Applications:

WB IHC

Reactivity:

Human, Mouse, Rat

Protein Background

This gene encodes a member of the sulfotransferase family. Sulfotransferases aid in the metabolism of drugs and endogenous compounds by converting these substances into more hydrophilic water-soluble sulfate conjugates that can be easily excreted. This protein catalyzes the sulfation of steroids and bile acids in the liver and adrenal glands, and may have a role in the inherited adrenal androgen excess in women with polycystic ovary syndrome.

Immunogen information

Gene ID:

6822

Uniprot

Q06520

Synonyms:

SULT2A1; DHEA-ST; DHEAS; HST; ST2; ST2A1; ST2A3; STD; hSTa

Antibody Information

Recommended dilutions:

WB 1:500 - 1:2000 IHC 1:50
- 1:200

Source:

Rabbit

Isotype:

IgG

Purification:

Affinity purification

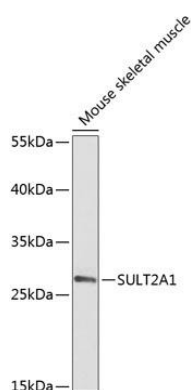
Immunogen:

Recombinant fusion protein containing a sequence corresponding to amino acids 1-145 of human SULT2A1 (NP_003158.2).

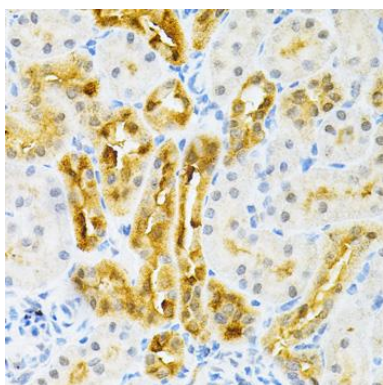
Storage:

Store at -20°C. Avoid freeze / thaw cycles. Buffer: PBS with 0.02% sodium azide, 50% glycerol, pH7.3.

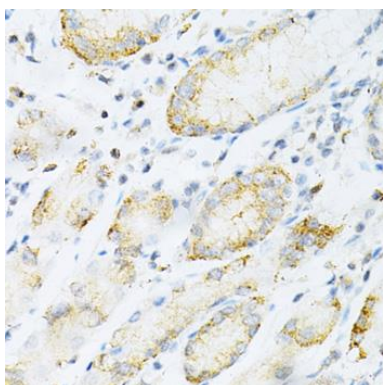
Product Images



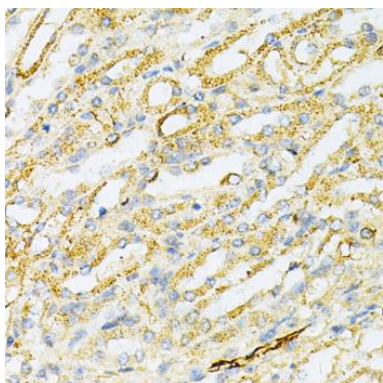
Western blot analysis of extracts of mouse skeletal muscle, using SULT2A1 antibody (CAB14063) at 1:2000 dilution. Secondary antibody: HRP Goat Anti-Rabbit IgG (H+L) (CABS014) at 1:10000 dilution. Lysates/proteins: 25ug per lane. Blocking buffer: 3% nonfat dry milk in TBST. Detection: ECL Enhanced Kit (CABM00021). Exposure time: 50s.



Immunohistochemistry of paraffin-embedded rat kidney using SULT2A1 Antibody (CAB14063) at dilution of 1:200 (40x lens).



Immunohistochemistry of paraffin-embedded human gastric cancer using SULT2A1 Antibody (CAB14063) at dilution of 1:200 (40x lens).



Immunohistochemistry of paraffin-embedded mouse kidney using SULT2A1 Antibody (CAB14063) at dilution of 1:200 (40x lens).