

# LEFTY2 Rabbit Polyclonal Antibody



CAB14065

---

## Product Information

### Size:

20uL, 50uL, 100uL, 200uL

### Observed MW:

41kDa

### Calculated MW:

37kDa/40kDa

### Applications:

WB

### Reactivity:

Human, Mouse, Rat

## Antibody Information

### Recommended dilutions:

WB 1:500 - 1:2000

### Source:

Rabbit

### Isotype:

IgG

### Purification:

Affinity purification

## Protein Background

This gene encodes a member of the TGF-beta family of proteins. The encoded protein is secreted and plays a role in left-right asymmetry determination of organ systems during development. The protein may also play a role in endometrial bleeding. Mutations in this gene have been associated with left-right axis malformations, particularly in the heart and lungs. Some types of infertility have been associated with dysregulated expression of this gene in the endometrium. Alternative processing of this protein can yield three different products. This gene is closely linked to both a related family member and a related pseudogene. Alternate splicing of this gene results in multiple transcript variants.

## Immunogen information

### Gene ID:

7044

### Uniprot

O00292

### Synonyms:

LEFTY2; EBAF; LEFTA; LEFTYA; TGFB4

### Immunogen:

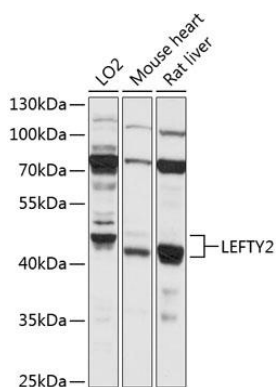
Recombinant fusion protein containing a sequence corresponding to amino acids 57-366 of human LEFTY2 (NP\_003231.2).

### Storage:

Store at -20°C. Avoid freeze / thaw cycles. Buffer: PBS with 0.02% sodium azide, 50% glycerol, pH7.3.

## Product Images

---



Western blot analysis of extracts of various cell lines, using LEFTY2 antibody (CAB14065) at 1:1000 dilution. Secondary antibody: HRP Goat Anti-Rabbit IgG (H+L) (CABS014) at 1:10000 dilution. Lysates/proteins: 25ug per lane. Blocking buffer: 3% nonfat dry milk in TBST. Detection: ECL Basic Kit (CABM00020). Exposure time: 5s.