

# Cyclin E2 Rabbit Polyclonal Antibody



CAB14086

---

## Product Information

### Size:

20uL, 50uL, 100uL, 200uL

### Observed MW:

### Calculated MW:

41kDa/46kDa

### Applications:

WB IHC IF

### Reactivity:

Human, Rat

## Protein Background

The protein encoded by this gene belongs to the highly conserved cyclin family, whose members are characterized by a dramatic periodicity in protein abundance through the cell cycle. Cyclins function as regulators of CDK kinases. Different cyclins exhibit distinct expression and degradation patterns which contribute to the temporal coordination of each mitotic event. This cyclin forms a complex with and functions as a regulatory subunit of CDK2. This cyclin has been shown to specifically interact with CIP/KIP family of CDK inhibitors, and plays a role in cell cycle G1/S transition. The expression of this gene peaks at the G1-S phase and exhibits a pattern of tissue specificity distinct from that of cyclin E1. A significantly increased expression level of this gene was observed in tumor-derived cells.

## Immunogen information

### Gene ID:

9134

### Uniprot

O96020

## Antibody Information

### Recommended dilutions:

WB 1:500 - 1:2000 IHC 1:50  
- 1:200 IF 1:50 - 1:200

### Source:

Rabbit

### Isotype:

IgG

### Purification:

Affinity purification

### Synonyms:

CCNE2; CYCE2; cyclin E2

### Immunogen:

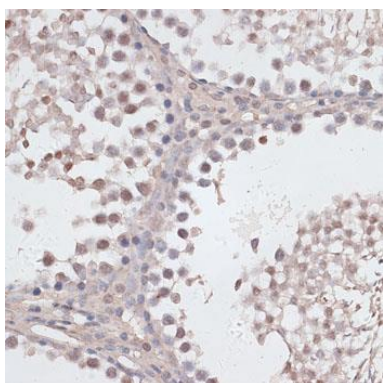
Recombinant fusion protein containing a sequence corresponding to amino acids 255-404 of human Cyclin E2 (NP\_477097.1).

### Storage:

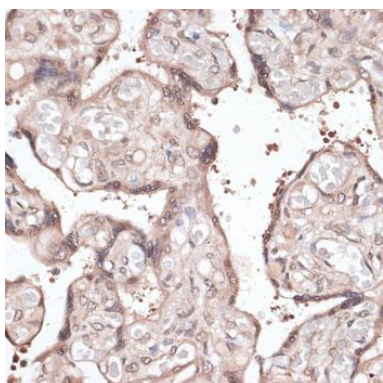
Store at -20°C. Avoid freeze / thaw cycles. Buffer: PBS with 0.02% sodium azide, 50% glycerol, pH7.3.

## Product Images

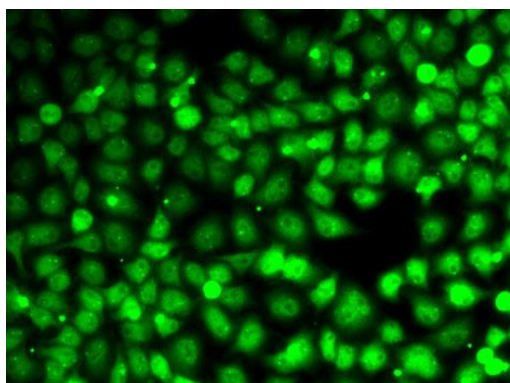
---



Immunohistochemistry of paraffin-embedded rat testis using Cyclin E2 antibody (CAB14086) at dilution of 1:100 (40x lens).



Immunohistochemistry of paraffin-embedded human placenta using Cyclin E2 antibody (CAB14086) at dilution of 1:100 (40x lens).



Immunofluorescence analysis of MCF7 cells using Cyclin E2 antibody (CAB14086).