

# SYNGR1 Rabbit Polyclonal Antibody



CAB14087

---

## Product Information

### Size:

20uL, 50uL, 100uL, 200uL

### Observed MW:

25kDa

### Calculated MW:

21kDa/25kDa

### Applications:

WB

### Reactivity:

Mouse, Rat

## Protein Background

This gene encodes an integral membrane protein associated with presynaptic vesicles in neuronal cells. The exact function of this protein is unclear, but studies of a similar murine protein suggest that it functions in synaptic plasticity without being required for synaptic transmission. The gene product belongs to the synaptogyrin gene family. Three alternatively spliced variants encoding three different isoforms have been identified.

## Immunogen information

### Gene ID:

9145

### Uniprot

O43759

### Synonyms:

SYNGR1

## Antibody Information

### Recommended dilutions:

WB 1:500 - 1:2000

### Source:

Rabbit

### Isotype:

IgG

### Purification:

Affinity purification

### Immunogen:

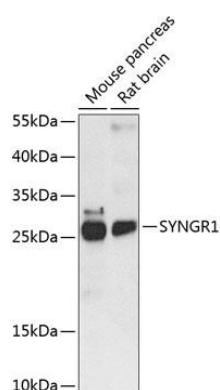
Recombinant fusion protein containing a sequence corresponding to amino acids 1-191 of human SYNGR1 (NP\_663783.1).

### Storage:

Store at -20°C. Avoid freeze / thaw cycles. Buffer: PBS with 0.02% sodium azide, 50% glycerol, pH7.3.

## Product Images

---



Western blot analysis of extracts of various cell lines, using SYNGR1 antibody (CAB14087) at 1:1000 dilution. Secondary antibody: HRP Goat Anti-Rabbit IgG (H+L) (CABS014) at 1:10000 dilution. Lysates/proteins: 25ug per lane. Blocking buffer: 3% nonfat dry milk in TBST. Detection: ECL Enhanced Kit (CABM00021). Exposure time: 90s.