

ZNF264 Rabbit Polyclonal Antibody



CAB14089

Product Information

Size:

20uL, 50uL, 100uL, 200uL

Observed MW:

71kDa

Calculated MW:

70kDa

Applications:

WB IHC IF

Reactivity:

Human, Mouse, Rat

Protein Background

This gene encodes a zinc finger protein and belongs to the krueppel C2H2-type zinc-finger protein family. Zinc finger proteins are often localized in the nucleus, bind nucleic acids, and regulate transcription.

Immunogen information

Gene ID:

9422

Uniprot

O43296

Synonyms:

ZNF264

Antibody Information

Recommended dilutions:

WB 1:500 - 1:2000 IHC 1:50
- 1:200 IF 1:50 - 1:200

Source:

Rabbit

Isotype:

IgG

Purification:

Affinity purification

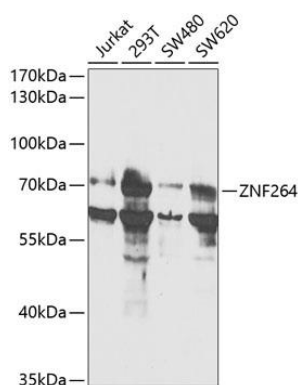
Immunogen:

Recombinant fusion protein containing a sequence corresponding to amino acids 1-220 of human ZNF264 (NP_003408.1).

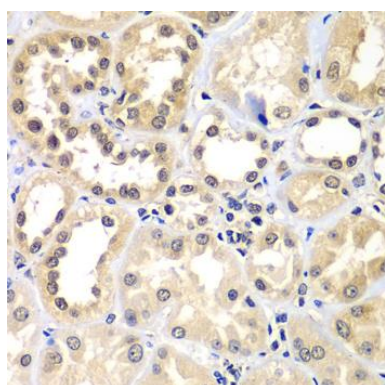
Storage:

Store at -20°C. Avoid freeze / thaw cycles. Buffer: PBS with 0.02% sodium azide, 50% glycerol, pH7.3.

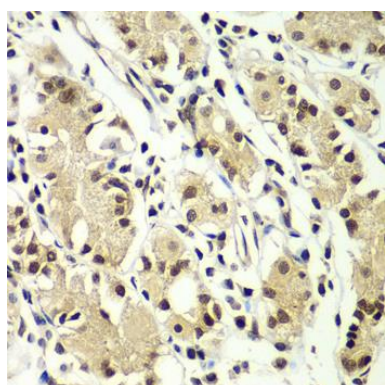
Product Images



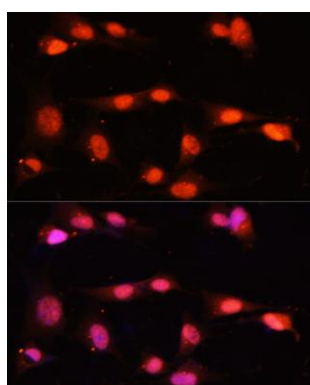
Western blot analysis of extracts of various cell lines, using ZNF264 antibody (CAB14089) at 1:1000 dilution. Secondary antibody: HRP Goat Anti-Rabbit IgG (H+L) (CABS014) at 1:10000 dilution. Lysates/proteins: 25ug per lane. Blocking buffer: 3% nonfat dry milk in TBST. Detection: ECL Basic Kit (CABM00020). Exposure time: 90s.



Immunohistochemistry of paraffin-embedded human kidney using ZNF264 antibody (CAB14089) at dilution of 1:100 (40x lens).



Immunohistochemistry of paraffin-embedded human gastric using ZNF264 antibody (CAB14089) at dilution of 1:100 (40x lens).



Immunofluorescence analysis of NIH-3T3 cells using ZNF264 antibody (CAB14089) at dilution of 1:100. Blue: DAPI for nuclear staining.