

NDC80 Rabbit Polyclonal Antibody



CAB14102

Product Information

Size:

20uL, 50uL, 100uL, 200uL

Observed MW:

74kDa

Calculated MW:

73kDa

Applications:

WB

Reactivity:

Human, Mouse

Protein Background

This gene encodes a component of the NDC80 kinetochore complex. The encoded protein consists of an N-terminal microtubule binding domain and a C-terminal coiled-coiled domain that interacts with other components of the complex. This protein functions to organize and stabilize microtubule-kinetochore interactions and is required for proper chromosome segregation.

Immunogen information

Gene ID:

10403

Uniprot

O14777

Synonyms:

NDC80; HEC; HEC1; HsHec1; KNTC2; TID3; hsNDC80

Antibody Information

Recommended dilutions:

WB 1:500 - 1:2000

Source:

Rabbit

Isotype:

IgG

Purification:

Affinity purification

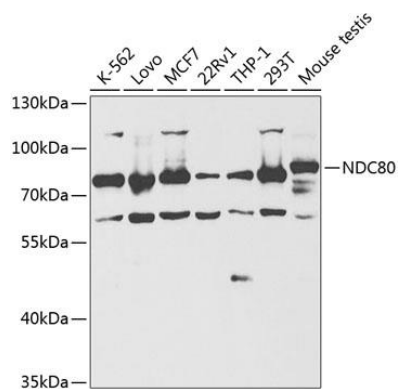
Immunogen:

Recombinant fusion protein containing a sequence corresponding to amino acids 343-642 of human NDC80 (NP_006092.1).

Storage:

Store at -20°C. Avoid freeze / thaw cycles. Buffer: PBS with 0.02% sodium azide, 50% glycerol, pH7.3.

Product Images



Western blot analysis of extracts of various cell lines, using NDC80 antibody (CAB14102) at 1:1000 dilution. Secondary antibody: HRP Goat Anti-Rabbit IgG (H+L) (CABS014) at 1:10000 dilution. Lysates/proteins: 25ug per lane. Blocking buffer: 3% nonfat dry milk in TBST. Detection: ECL Basic Kit (CABM00020). Exposure time: 60s.