

IGF2BP2 Rabbit Polyclonal Antibody



CAB14103

Product Information

Size:

20uL, 50uL, 100uL, 200uL

Observed MW:

70kDa

Calculated MW:

54kDa/58kDa/59kDa/61kDa/
66kDa

Applications:

WB IF

Reactivity:

Human, Mouse, Rat

Antibody Information

Recommended dilutions:

WB 1:500 - 1:2000 IF 1:50 -
1:200

Source:

Rabbit

Isotype:

IgG

Purification:

Affinity purification

Protein Background

This gene encodes a member of the IGF-II mRNA-binding protein (IMP) family. The protein encoded by this gene contains four KH domains and two RRM domains. It functions by binding to the 5' UTR of the insulin-like growth factor 2 (IGF2) mRNA and regulating IGF2 translation. Alternative promoter usage and alternate splicing result in multiple variants encoding different isoforms.

Immunogen information

Gene ID:

10644

Uniprot

Q9Y6M1

Synonyms:

IGF2BP2; IMP-2; IMP2; VICKZ2

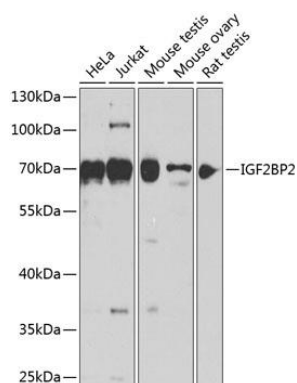
Immunogen:

A synthetic peptide corresponding to a sequence within amino acids 500 to the C-terminus of human IGF2BP2 (NP_006539.3).

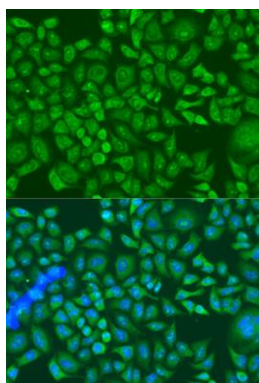
Storage:

Store at -20°C. Avoid freeze / thaw cycles. Buffer: PBS with 0.02% sodium azide, 50% glycerol, pH7.3.

Product Images



Western blot analysis of extracts of various cell lines, using IGF2BP2 antibody (CAB14103) at 1:1000 dilution. Secondary antibody: HRP Goat Anti-Rabbit IgG (H+L) (CABS014) at 1:10000 dilution. Lysates/proteins: 25ug per lane. Blocking buffer: 3% nonfat dry milk in TBST. Detection: ECL Enhanced Kit (CABM00021). Exposure time: 10s.



Immunofluorescence analysis of U2OS cells using IGF2BP2 antibody (CAB14103) at dilution of 1:100. Blue: DAPI for nuclear staining.