

STIP1 Rabbit Polyclonal Antibody



CAB14106

Product Information

Size:

20uL, 50uL, 100uL, 200uL

Observed MW:

69kDa

Calculated MW:

59kDa/62kDa/68kDa

Applications:

WB IHC IF IP

Reactivity:

Human, Mouse, Rat, Monkey

Antibody Information

Recommended dilutions:

WB 1:500 - 1:2000 IHC 1:50
- 1:200 IF 1:50 - 1:200 IP
1:20 - 1:50

Source:

Rabbit

Isotype:

IgG

Purification:

Affinity purification

Protein Background

Immunogen information

Gene ID:

10963

Uniprot

P31948

Synonyms:

STIP1; HEL-S-94n; HOP; IEF-SSP-3521; P60; STI1; STI1L

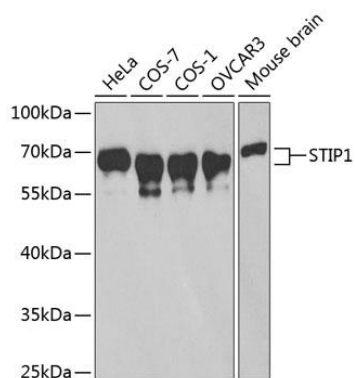
Immunogen:

Recombinant fusion protein containing a sequence corresponding to amino acids 1-300 of human STIP1 (NP_006810.1).

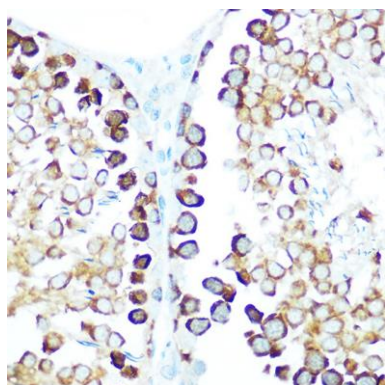
Storage:

Store at -20°C. Avoid freeze / thaw cycles. Buffer: PBS with 0.02% sodium azide, 50% glycerol, pH7.3.

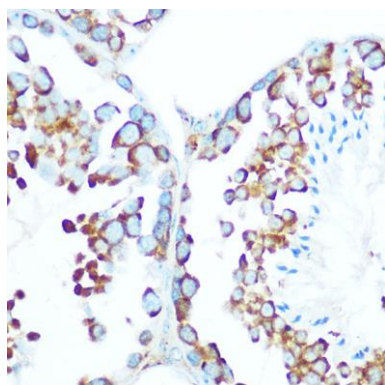
Product Images



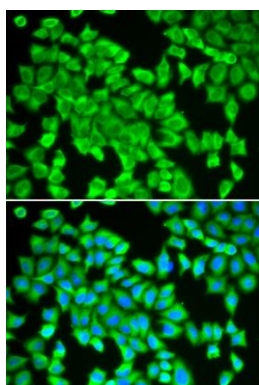
Western blot analysis of extracts of various cell lines, using STIP1 antibody (CAB14106) at 1:1000 dilution. Secondary antibody: HRP Goat Anti-Rabbit IgG (H+L) (CABS014) at 1:10000 dilution. Lysates/proteins: 25ug per lane. Blocking buffer: 3% nonfat dry milk in TBST.



Immunohistochemistry of paraffin-embedded rat testis using STIP1 Rabbit pAb (CAB14106) at dilution of 1:100 (40x lens).



Immunohistochemistry of paraffin-embedded mouse testis using STIP1 Rabbit pAb (CAB14106) at dilution of 1:100 (40x lens).



Immunofluorescence analysis of HeLa cells using STIP1 antibody (CAB14106). Blue: DAPI for nuclear staining.