

IMMT Rabbit Polyclonal Antibody



CAB14107

Product Information

Size:

20uL, 50uL, 100uL, 200uL

Observed MW:

84kDa

Calculated MW:

80kDa/82kDa/83kDa

Applications:

WB IHC

Reactivity:

Human, Mouse, Rat

Antibody Information

Recommended dilutions:

WB 1:500 - 1:2000 IHC 1:50
- 1:200

Source:

Rabbit

Isotype:

IgG

Purification:

Affinity purification

Protein Background

Immunogen information

Gene ID:

10989

Uniprot

Q16891

Synonyms:

IMMT; HMP; MINOS2; Mic60; P87; P87/89; P89; PIG4; PIG52

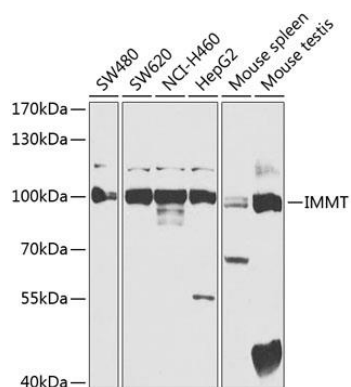
Immunogen:

Recombinant protein of human IMMT

Storage:

Store at -20°C. Avoid freeze / thaw cycles. Buffer: PBS with 0.02% sodium azide, 50% glycerol, pH7.3.

Product Images



Western blot analysis of extracts of various cell lines, using IMMT antibody (CAB14107) at 1:400 dilution. Secondary antibody: HRP Goat Anti-Rabbit IgG (H+L) (CABS014) at 1:10000 dilution. Lysates/proteins: 25ug per lane. Blocking buffer: 3% nonfat dry milk in TBST. Detection: ECL Basic Kit (CABM00020). Exposure time: 10s.