

DMD Rabbit Polyclonal Antibody



CAB1411

Product Information

Size:

20uL, 50uL, 100uL, 200uL

Observed MW:

427kDa

Calculated MW:

57-72kDa/271kDa/425-426kDa

Applications:

WB IHC IF

Reactivity:

Human, Mouse, Rat

Antibody Information

Recommended dilutions:

WB 1:200 - 1:2000 IHC 1:50
- 1:200 IF 1:50 - 1:200

Source:

Rabbit

Isotype:

IgG

Purification:

Affinity purification

Protein Background

This gene spans a genomic range of greater than 2 Mb and encodes a large protein containing an N-terminal actin-binding domain and multiple spectrin repeats. The encoded protein forms a component of the dystrophin-glycoprotein complex (DGC), which bridges the inner cytoskeleton and the extracellular matrix. Deletions, duplications, and point mutations at this gene locus may cause Duchenne muscular dystrophy (DMD), Becker muscular dystrophy (BMD), or cardiomyopathy. Alternative promoter usage and alternative splicing result in numerous distinct transcript variants and protein isoforms for this gene.

Immunogen information

Gene ID:

1756

Uniprot

P11532

Synonyms:

DMD; BMD; CMD3B; DXS142; DXS164; DXS206; DXS230; DXS239;
DXS268; DXS269; DXS270; DXS272; MRX85

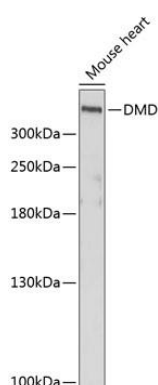
Immunogen:

Recombinant fusion protein containing a sequence corresponding to amino acids 346-635 of human DMD (NP_004007.1).

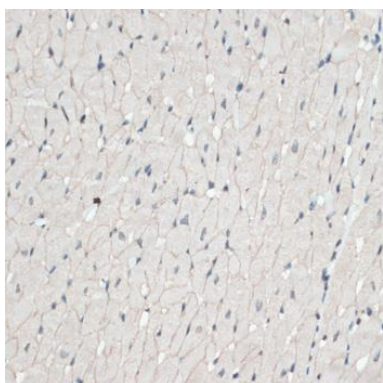
Storage:

Store at -20°C. Avoid freeze / thaw cycles. Buffer: PBS with 0.02% sodium azide, 50% glycerol, pH7.3.

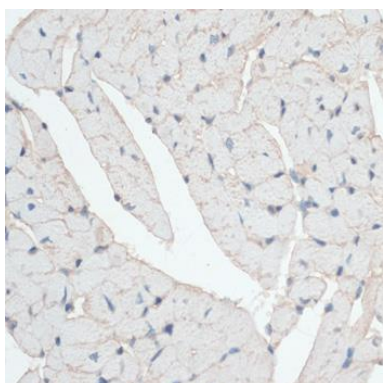
Product Images



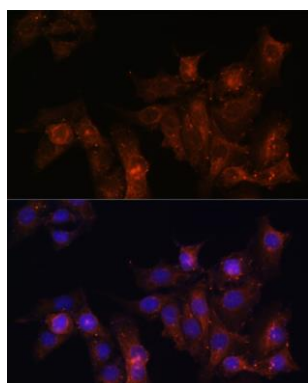
Western blot analysis of extracts of mouse heart, using DMD antibody (CAB1411) at 1:1000 dilution. Secondary antibody: HRP Goat Anti-Rabbit IgG (H+L) (CABS014) at 1:10000 dilution. Lysates/proteins: 25ug per lane. Blocking buffer: 3% nonfat dry milk in TBST. Detection: ECL Enhanced Kit (CABM00021). Exposure time: 90s.



Immunohistochemistry of paraffin-embedded rat heart using DMD antibody (CAB1411) at dilution of 1:100 (40x lens).



Immunohistochemistry of paraffin-embedded mouse heart using DMD antibody (CAB1411) at dilution of 1:100 (40x lens).



Immunofluorescence analysis of HeLa cells using DMD antibody (CAB1411) at dilution of 1:100. Blue: DAPI for nuclear staining.