

# EIF2AK1 Rabbit Polyclonal Antibody



CAB14119

## Product Information

### Size:

20uL, 50uL, 100uL, 200uL

### Observed MW:

71kDa

### Calculated MW:

71kDa

### Applications:

WB IHC

### Reactivity:

Human, Rat

## Protein Background

The protein encoded by this gene acts at the level of translation initiation to downregulate protein synthesis in response to stress. The encoded protein is a kinase that can be inactivated by hemin. Two transcript variants encoding different isoforms have been found for this gene.

## Immunogen information

### Gene ID:

27102

### Uniprot

Q9BQI3

### Synonyms:

EIF2AK1; HCR; HRI

## Antibody Information

### Recommended dilutions:

WB 1:500 - 1:2000 IHC 1:50  
- 1:200

### Source:

Rabbit

### Isotype:

IgG

### Purification:

Affinity purification

### Immunogen:

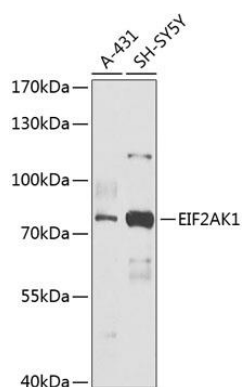
Recombinant fusion protein containing a sequence corresponding to amino acids 371-630 of human EIF2AK1 (NP\_055228.2).

### Storage:

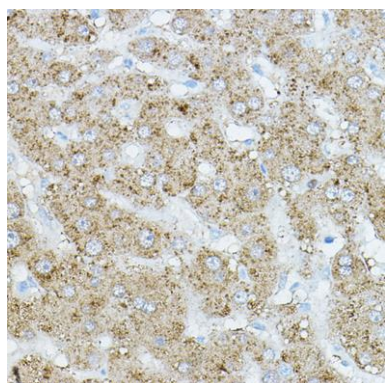
Store at -20°C. Avoid freeze / thaw cycles. Buffer: PBS with 0.02% sodium azide, 50% glycerol, pH7.3.

## Product Images

---



Western blot analysis of extracts of various cell lines, using EIF2AK1 antibody (CAB14119) at 1:1000 dilution. Secondary antibody: HRP Goat Anti-Rabbit IgG (H+L) (CABS014) at 1:10000 dilution. Lysates/proteins: 25ug per lane. Blocking buffer: 3% nonfat dry milk in TBST. Detection: ECL Basic Kit (CABM00020). Exposure time: 60s.



Immunohistochemistry of paraffin-embedded human liver using EIF2AK1 Rabbit pAb (CAB14119) at dilution of 1:500 (40x lens).