

CSNK1G1 Rabbit Polyclonal Antibody



CAB14133

Product Information

Size:

20uL, 50uL, 100uL, 200uL

Observed MW:

49kDa

Calculated MW:

45kDa/48kDa

Applications:

WB

Reactivity:

Human, Mouse

Protein Background

This gene encodes a member of the casein kinase I gene family. The encoded protein is a serine/threonine kinase that phosphorylates acidic proteins, and participates in pathways for cell growth.

Immunogen information

Gene ID:

53944

Uniprot

Q9HCPO

Synonyms:

CSNK1G1; CK1gamma1

Antibody Information

Recommended dilutions:

WB 1:500 - 1:2000

Source:

Rabbit

Isotype:

IgG

Purification:

Affinity purification

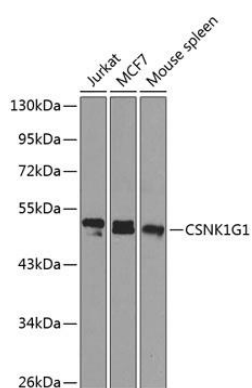
Immunogen:

Recombinant fusion protein containing a sequence corresponding to amino acids 298-422 of human CSNK1G1 (NP_071331.2).

Storage:

Store at -20°C. Avoid freeze / thaw cycles. Buffer: PBS with 0.02% sodium azide, 50% glycerol, pH7.3.

Product Images



Western blot analysis of extracts of various cell lines, using CSNK1G1 antibody (CAB14133) at 1:1000 dilution. Secondary antibody: HRP Goat Anti-Rabbit IgG (H+L) (CABS014) at 1:10000 dilution. Lysates/proteins: 25ug per lane. Blocking buffer: 3% nonfat dry milk in TBST. Detection: ECL Basic Kit (CABM00020). Exposure time: 30s.